



Milesight-Troubleshooting

How to set up POS function

NVR Firmware	XX.9.0.13 or above	Update	2021.1.27
--------------	--------------------	--------	-----------

1. Introduction

To better enrich user's product experience, Milesight NVR realize a POS function which combines POS and security system, so that the POS message and Live view can be watched by NVR together.

Note: Only available for NVR's firmware version XX.9.0.13 or above.

2. How to Set POS ?

Totally, NVR has two interfaces to enable this function.

2.1 Enable POS function on monitor side and web side

Path : Select "Smart Analysis" -> Click "Analysis Settings" -> Choose "POS"

Monitor side:



Web side:

POS Settings

POS No.: 1

POS: Enable

POS Name: POS 1

POS Protocol: General

Connection Mode: TCP

Connection Mode Settings: Edit

Live View Display: Enable

Display Channel: 1

Display Region Settings

Reset

Live View Settings

Character Encoding: Unicode(UTF-8)

Font Size: Large

Font Color: Pink

Overlay Mode: Roll

Display Time: 5 S=3600s

Timeout: 5 S=3600s

Privacy Settings: Edit

Effective Time: Edit

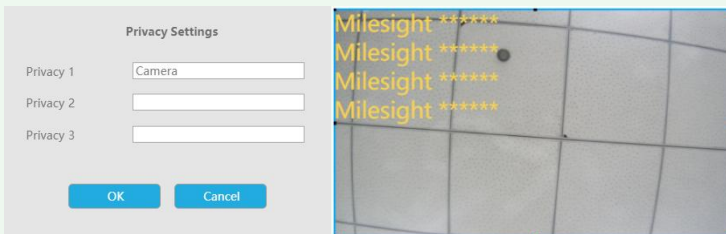
Action: Edit

Save

Please configure record channel in Action interface if needed.

Description of the buttons:

Parameters	Function Introduction
POS No.	Choose POS number. Note: The number of POS is depend on the NVR's model difference. MS-N1004-UPC/UC and MS-N5008-UPC/UC: 1~4 MS-N1009-UPT/UT, MS-N5008-UPT/UT, MS-N5016-UPT/UT: 1~8 MS-N7016-UPH/UH, MS-N7032-UPH/UH, MS-N8032-UPH/UH, MS-N8064-UPH/UH: 1~16
POS	Choose "enable" or "disable" the POS function.
POS Name	Users can customize and modify the POS name. Note: The max character are 32, can not be empty.
Connection Mode	Select the communication mode with the POS machine, choose "TCP" or "UDP".
Connection Mode Settings	Click "Edit", the "Connection Mode Settings" will pop-up, then enter the POS IP address and port number. <div data-bbox="647 1749 1149 1993"> <p>Connection Mode Settings</p> <p>POS IP Address <input type="text"/></p> <p>POS Port <input type="text"/></p> <p>OK Cancel</p> </div>

Live View Display	Choose "Enable" or "Disable" the POS information of the Live View.
Display Channel	Select which channel will display the POS information.
Display Region	The display region can be customized.
Character Encoding	Encoding format Unicode(UTF-8) of information returned by POS machine, can not be edited.
Font Size	Choose "small, medium or large" size of the POS information.
Font Color	Choose the color of POS message. "White, Red, Pink, Purple, Dark Blue, Cyan, Dark Cyan, Dark Green and Yellow"
Overlay Mode	Page: After the POS message is displayed in full page, the message will move to another page to display. Roll: After the POS message is displayed in full page, the message will display in a scrolling replacement mode in this page bottom.
Display Time	Duration of displaying single POS information in Live View. Valid range: 5-3600s.
Timeout	Multiple messages will be the same message during a period time.
Privacy Settings	<p>The configured information is private information will displayed as *</p> <p>Note: The max character are 32 and no limit of special symbol and language.</p>  <p>The screenshot shows a 'Privacy Settings' dialog box with three input fields for 'Privacy 1', 'Privacy 2', and 'Privacy 3'. 'Privacy 1' is set to 'Camera'. Below the fields are 'OK' and 'Cancel' buttons. To the right, a camera view shows a grid of four panels. The top-left panel displays 'Milesight *****' in yellow text, which is masked.</p>
Effective Time	Set the schedule of the POS function.
Action	Set the action for receive the POS message.
Save/Apply	Click to activate the configuration of POS.

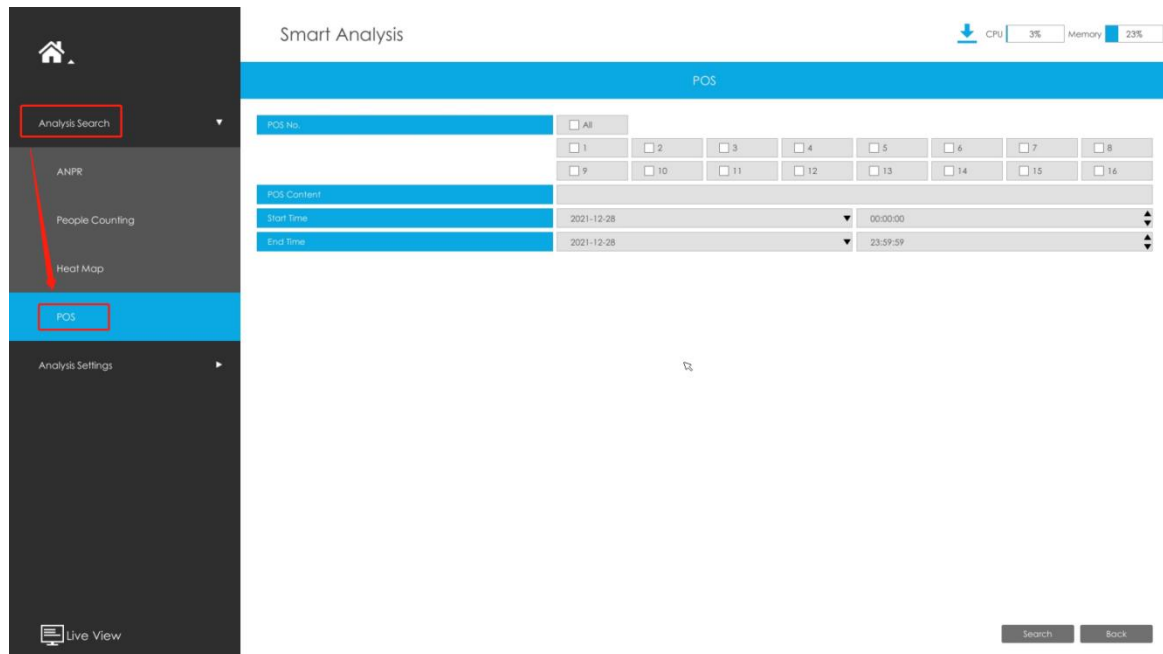
Note:

1. If the length of POS information displayed in Live View exceeds the width of display area, it will be wrap displayed automatically.
2. When the corresponding video record is overwritten, the corresponding POS information will be deleted or overwritten synchronously.
3. There is no related POS information in snapshots/video export/picture export.

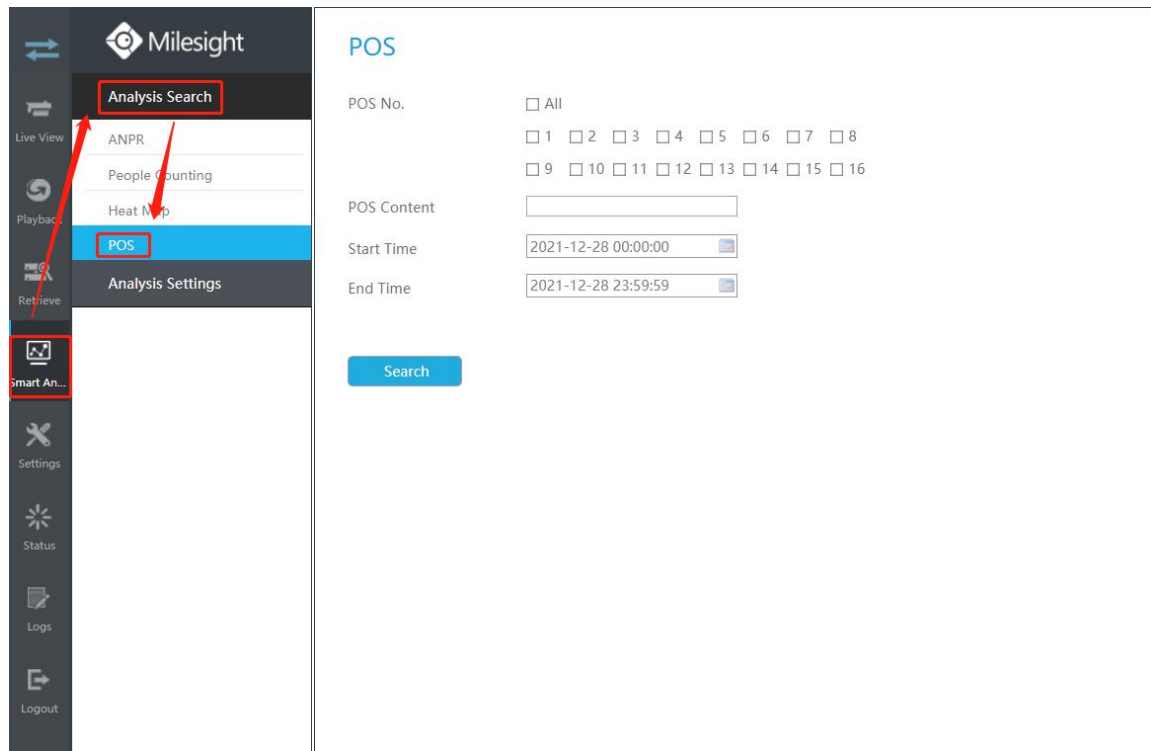
2.2 How to search POS information on monitor side and web side

Steps 1: Click “Smart Analysis” -> Choose “Analysis Search” -> Select “POS”

Monitor side:



Web side:





Description of the buttons:

Parameters	Function Introduction
POS No.	Search POS information. Note: The number of POS is depend on the NVR's model difference. MS-N1004-UPC/UC and MS-N5008-UPC/UC: 1~4 MS-N1009-UPT/UT, MS-N5008-UPT/UT, MS-N5016-UPT/UT: 1~8 MS-N7016-UPH/UH, MS-N7032-UPH/UH, MS-N8032-UPH/UH, MS-N8064-UPH/UH: 1~16
POS Content	Type POS information.
Start Time	Set the Start time of the POS.
End Time	Set the End time of the POS. Note: End time must be later than start time.
Search	Click "search button" to search the POS information based the configuration above.

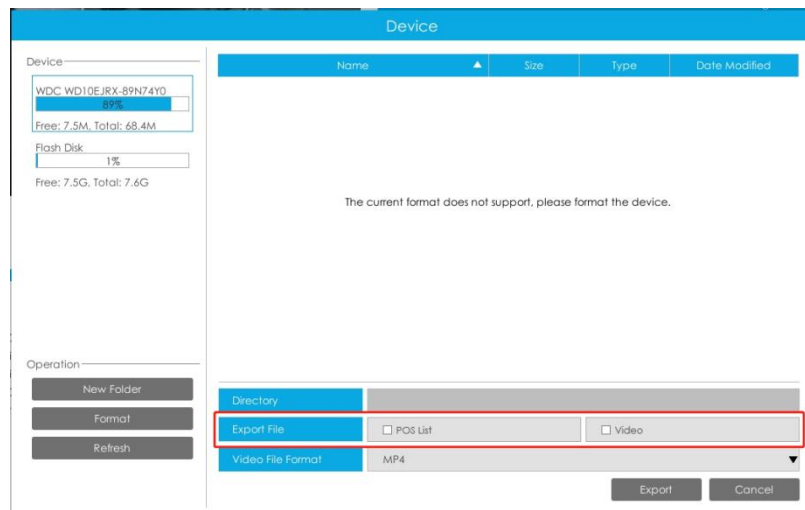
Note: After search successfully, the POS result will directly shows up.

Monitor side:

Web side:

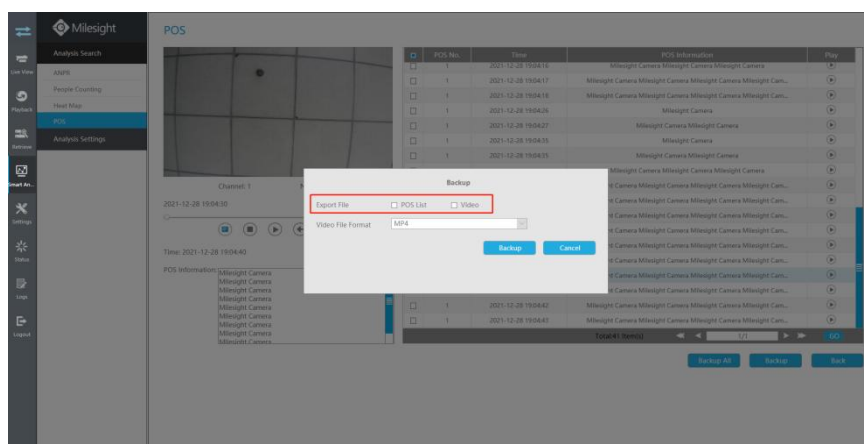
1. If this  button is blue, it means the video will show the POS information.
2. If this  button is white, it means the video will hide the POS information.
3. Click **Backup All** or **Backup** to backup the POS List or video.

Monitor side :



Note: Need a USB driver for backup.


Web side:



Note:

POS List: Excel file (CSV format).

The name of the file: NVR NAME _POS List_ YY/MM/DD/HOUR/MINUTE/SECOND.

 NVR_POS_List_20211229161216.csv

	A	B	C
1	POS No.	Time	POS Information
2	x	x	x
3	x	x	x
4	x	x	x
5	x	x	x
6	x	x	x
7	x	x	x
8	x	x	x
9	x	x	x
10	x	x	x
11	x	x	x
12	x	x	x
13	x	x	x
14	x	x	x

3.How to test POS function?

“NetAssist” is a Network tool which can help users to test POS function.

Here is the download link:

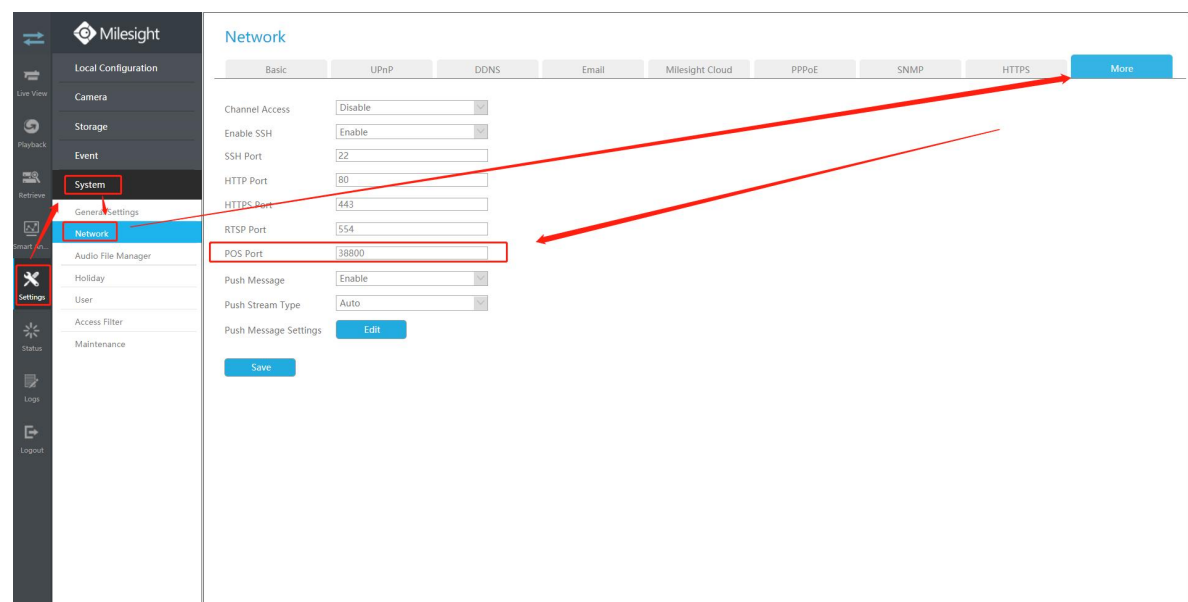
https://drive.google.com/file/d/1lfumV8LSMz_h7WvDgaTN8-sXZhReMxBr/view?usp=sharing

Step 1: Configure the POS setting on NVR

Path : Select “Smart Analysis” -> Click “Analysis Settings” -> Choose “POS”

Note: Follow the steps in 1-3 pages in this document.

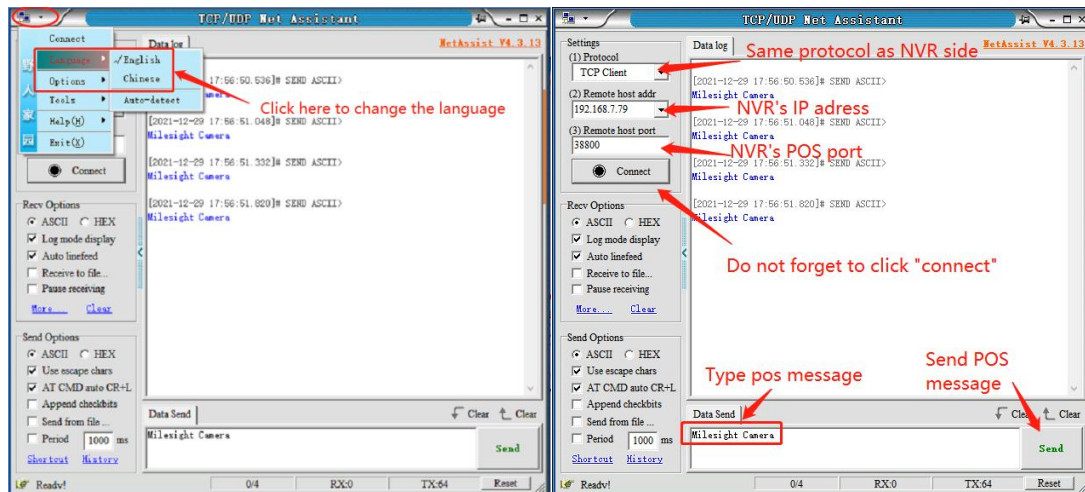
1. Connection Mode: Choose “UDP” or “TCP”, “NetAssist” should be the same with NVR side.
2. Connection Mode Settings: Type the back-end IP address, if download the “NetAssist” in PC, then write down the PC’s IP address.
3. Must configure a effective display channel.
4. You can change the “POS port” in NVR’ s setting --> System --> Network --> More --> POS port



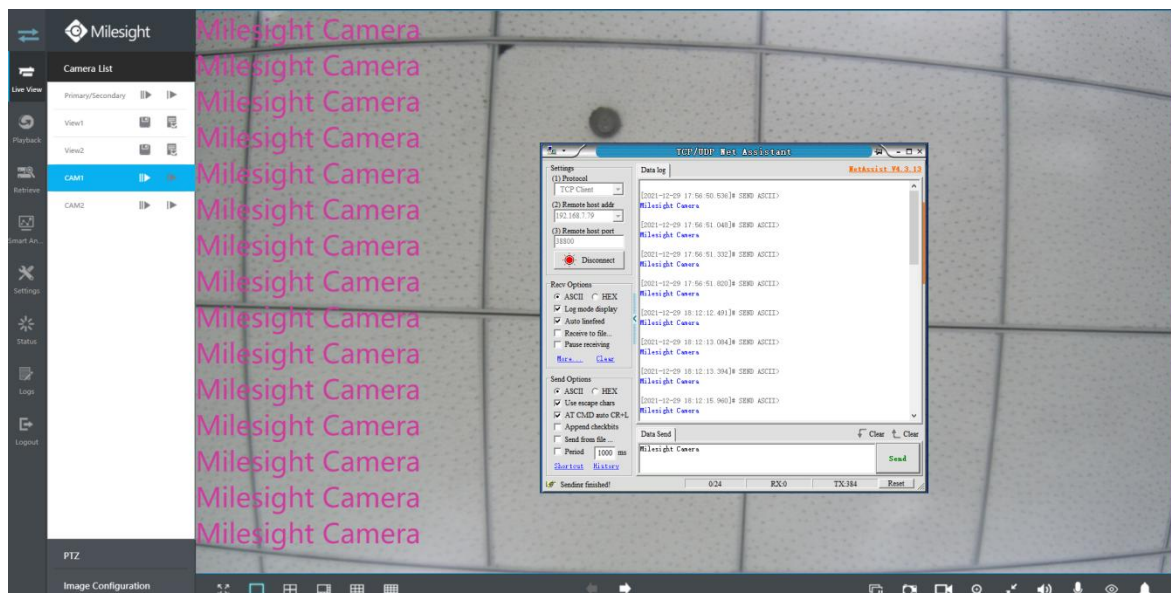
Step 2: Configure the test server (NetAssist).

Double click to open the “NetAssist”.

1. If the connection mode of NVR is TCP, then choose NetAssist as “TCP client”.
2. Enter NVR’s IP address into “Remote host addr”.
3. Must keep the “Remote host port” as same as the NVR’s POS port.



Step 3: After POS message send successfully, the message will display in the Live view.



END