



Milesight-Troubleshooting

Logout Related on Local Monitor

NVR Version	XX.9.0.11 or above	Update	2021.2.9
-------------	--------------------	--------	----------

1. Introduction

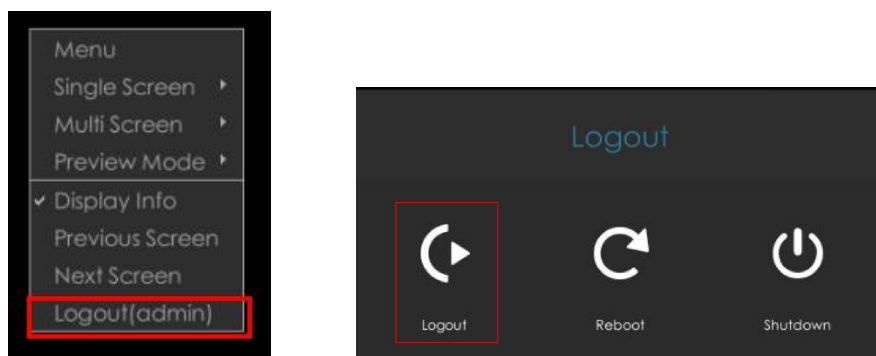
For data security, Milesight NVR is featured with logout function, which is used to avoid data being modified by others. We will introduce logout related functions including Auto Logout and Display When Logout on local monitor in the following contents.

Totally, there are two methods to logout: Logout and Auto Logout. We also provide various live view displays when logout.

1.1 Logout

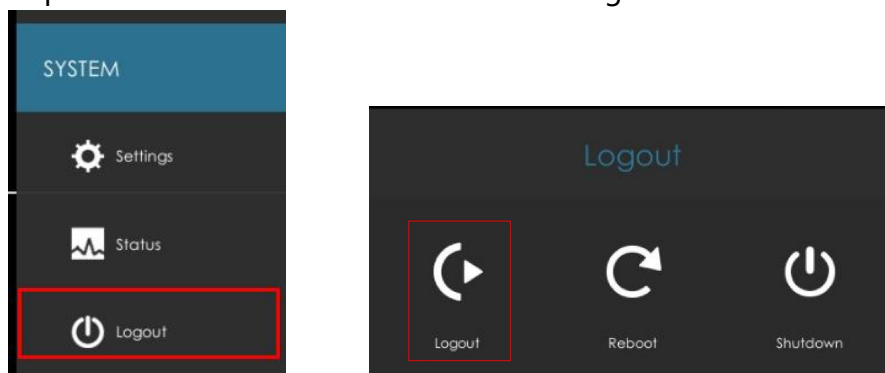
There are also two ways to log out on local monitor:

- 1) In Regular Mode or Target Mode live view, right-click then it will display



Then click Logout. It will show Logout interface. Click Logout to complete logout action.

- 2) Go this path: "Menu" -> "SYSTEM" -> "Logout" .



Then click Logout. It will show Logout interface. Click Logout to complete logout action.

1.2 Auto Logout

Auto Logout is a new function on local monitor. Please note only the NVR with firmware version 7x.9.0.11 or above supports this function.

Path: "Menu"-> "Settings" -> "People General" -> "Device" -> "Auto Logout"

Wizard	Start
Boot Wizard	Enable
Local Authentication	Enable
Menu Authentication	Disable
Settings Page Timeout	Disable
Auto Logout	Disable
Channel Display When Logout	Edit
Language	English

Auto Logout option is Disable by default, and you can choose logout standby time via this option. And the original Live View Layout will be displayed.

The following conditions will not trigger Auto Logout:

- 1) Play video in Live View interface.
- 2) Play video in Playback interface.
- 3) Play video in Retrieve interface.
- 4) Play video in Smart Analysis interface.
- 5) In Network Status, Camera Status, Disk Status, Event Status, Groups Status interface.
- 6) Upgrade related interface (NVR local upgrade, NVR online upgrade, IPC local upgrade, IPC online upgrade) while upgrading.

Other interfaces or other operations will trigger Auto Logout.

2. Display When Logout

Display When Logout function will take effect after triggering logout. It can effectively prevent others from seeing privacy.

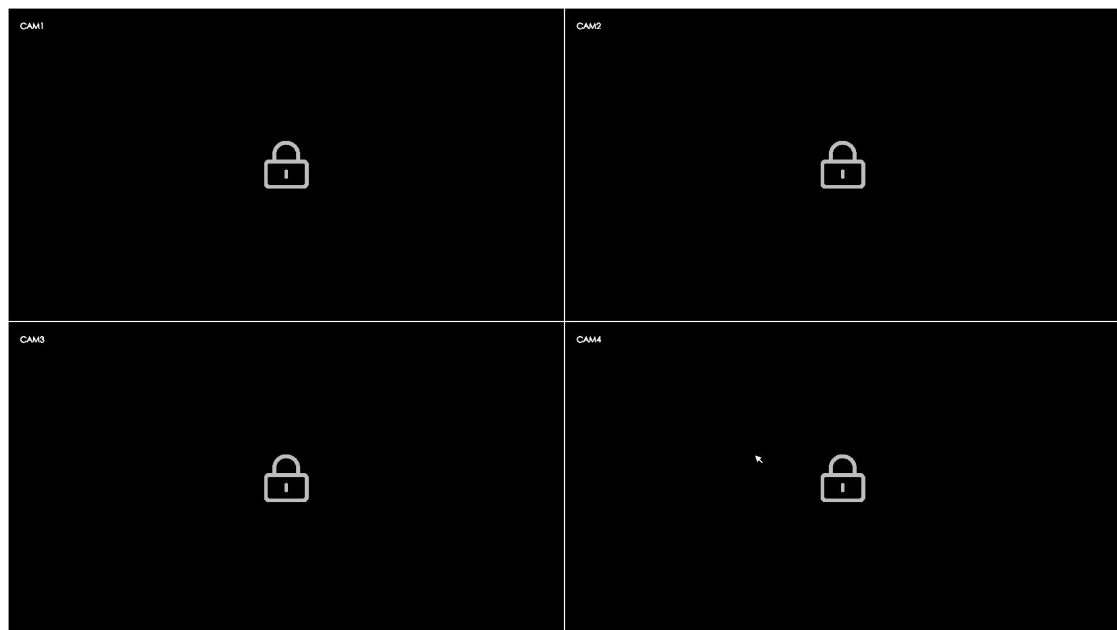
Path: "Settings" -> "General" -> "Device" -> "Display When Logout" -> "Edit"

Wizard	Start
Boot Wizard	Enable
Local Authentication	Enable
Menu Authentication	Disable
Settings Page Timeout	Disable
Auto Logout	Disable
Display When Logout	Edit
Language	English

Click "Edit", it will show Regular Mode by default.



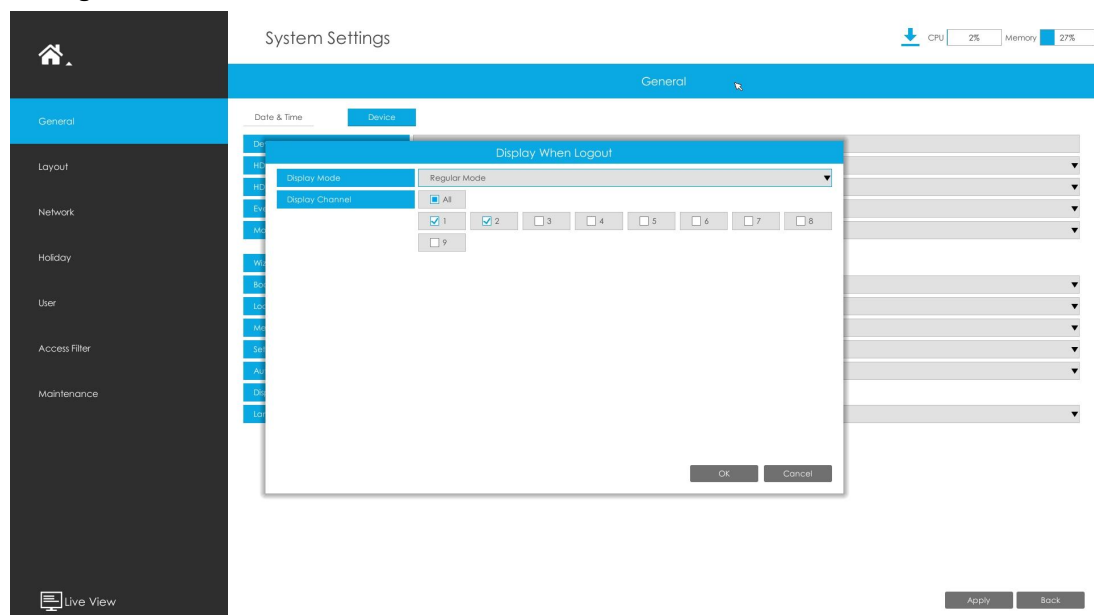
If you don't set Display When Logout, it will show as below:



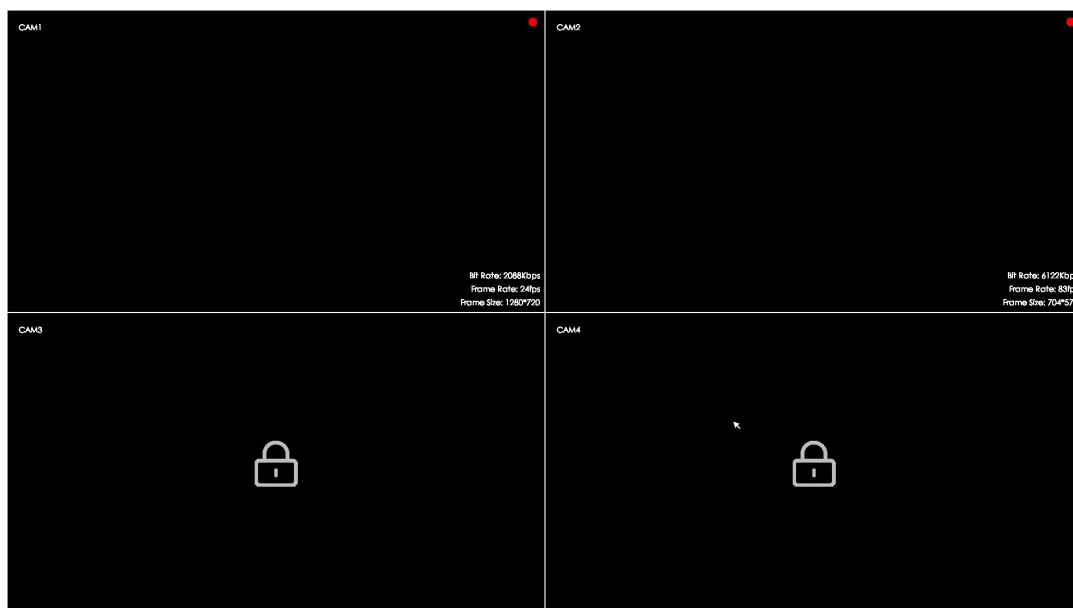
1) Regular Mode

The window is corresponding to display Regular Mode live view when logout. You can choose how many channels you want to display.

Setting interface:



Practical effect:



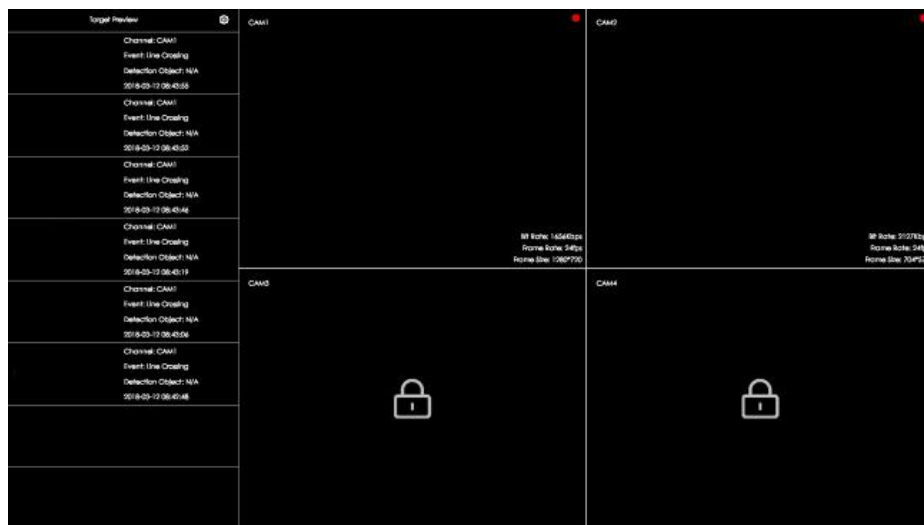
2) Target Mode

The window is corresponding to display Target Mode live view when logout. You can choose how many channels you want to display.

Setting interface:



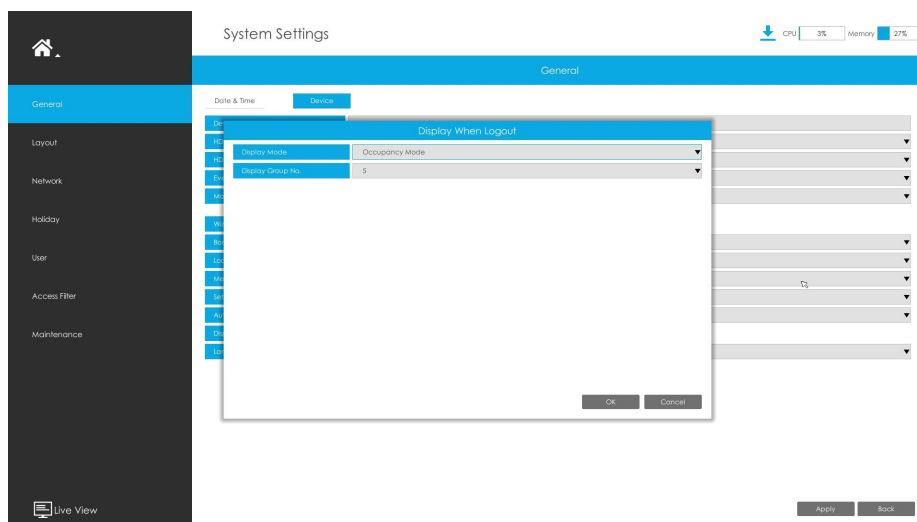
Practical effect:



3) Occupancy Mode

The window is corresponding to display regular mode live view when logout. Unlike other modes, Occupancy Mode only supports one Group to display.

Setting interface:



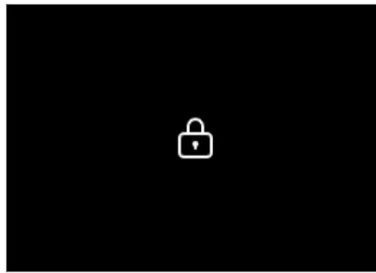
Practical effect:



Note:

- Checked channel: After Logout, it will display normally according to the original state (play, empty channel, disconnected), which means the state after logout keeps the same as before.

Unchecked channels: After Logout, the empty or disconnected channels will not display video. The locked pattern will displayed in the middle of the window.



- Camera actions will be displayed normally, such as patrol, alarm screen, etc. The action corresponding duration will not be recalculated while logout, and the duration keeps going.

-END-