



# Milesight-Troubleshooting

## Playback with Transcoding

Update	2021.12.21
--------	------------

### What is Milesight Transcoding?

Waiting for so long, but still can't see anything in playback?

Or just stuck in few frames, could not see a fluent recorded view?

.....

To solve these playback problems, Milesight unveils Transcoding for **MS-Nxxxx-UH** and **MS-Nxxxx-UPH**, helping the remote playback quicker and more fluent through M-Sight Pro , NVR web page and CMS client.

Transcoding aims to transcode the recorded stream into a smaller one, reducing network load and providing better playback performance.



**Please upgrade your NVR, M-Sight Pro and Milesight CMS to below versions to make transcoding take effect.**

	Version	Download Link
NVR	71.9.0.3 or above	<a href="https://www.milesight.com/support/download#firmware">https://www.milesight.com/support/download#firmware</a>
iOS M-Sight Pro	3.1.0.2-r6 or above	APP Store
Android M-Sight Pro	3.1.0.2-r7 or above	<a href="https://www.milesight.com/support/download#software">https://www.milesight.com/support/download#software</a>
Milesight CMS	2.4.0.4 or above	<a href="https://www.milesight.com/support/download#software">https://www.milesight.com/support/download#software</a>

### How to set Transcoding?

APP M-Sight Pro , NVR web page and CMS client has their own transcoding settings and can be separately set.

#### Set on APP M-Sight Pro

After searching out or playing recorded video in playback interface, click  to expand Transcoding panel. Then turn transcoding on, set desired parameters and click **Confirm** to make transcoding take effect.  means Transcoding is working. The default transcoding parameters are:

**Frame Size:** 704\*576

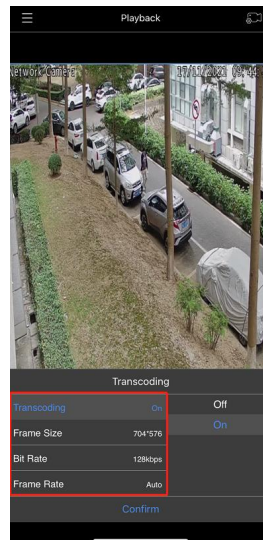
**Bit Rate:** 128kbps

**Frame Rate:** Auto



If the video performance is still not satisfying, please try to lower the transcoding

parameters.

It is recommended to enable transcoding before playing recorded video if device is in poor network situation.



## Set on NVR web page

After searching out or playing recorded video, click  to expand Transcoding panel. Then turn transcoding on, set desired parameters and click **Apply** to make transcoding take effect.  means transcoding is working.

The default transcoding parameters are:

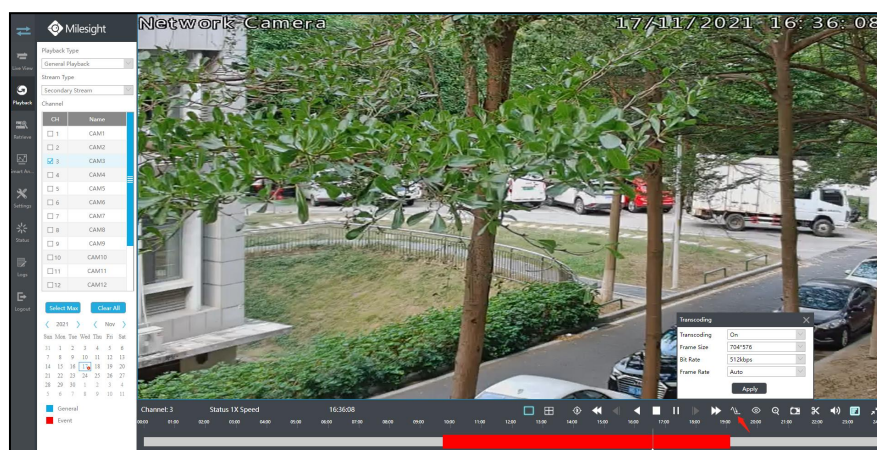
**Frame Size:** 704\*576

**Bit Rate:** 512kbps


**Frame Rate:** Auto

If the video performance is still not satisfying, please try to lower the transcoding parameters.

It is recommended to enable transcoding before playing recorded video if device is in poor network situation.



## Set on CMS client

After searching out or playing recorded video in playback interface, click  to expand Transcoding panel. Then set appropriate parameters according to your actual usage scenario. Click **Apply** to make transcoding take effect.



means transcoding is working.

The default transcoding parameters are:

**Frame Size:** 704\*576

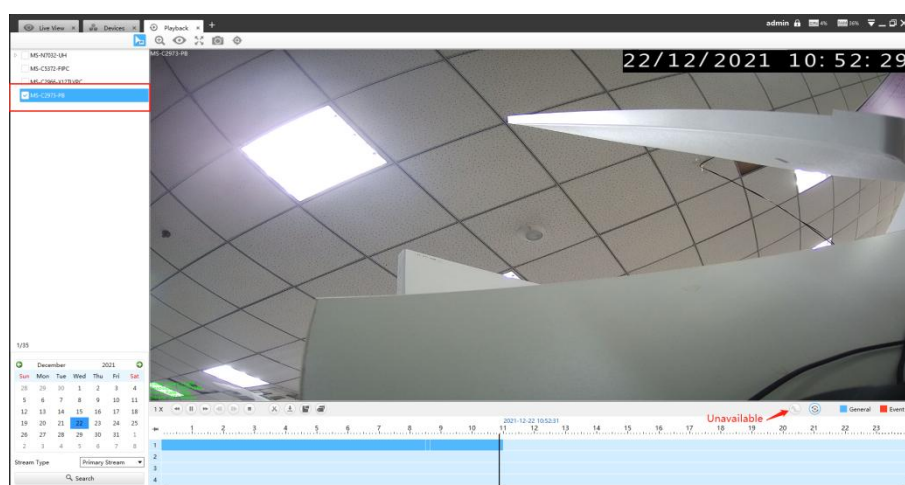
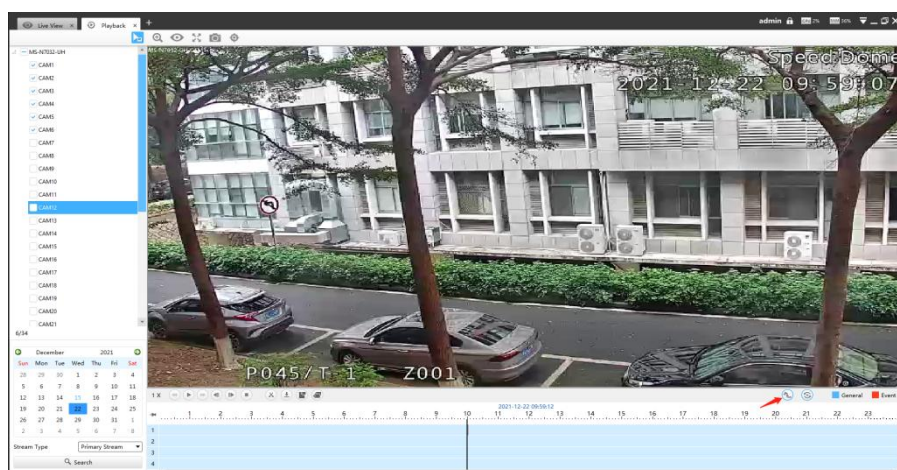
**Bit Rate:** 512kbps

**Frame Rate:** Auto

If the video performance is still not satisfying, please try to lower the transcoding parameters.

It is recommended to enable transcoding before playing recorded video if device is in poor network situation.

**Notion:** Transcoding is only available when playing recorded video on NVR. It is not supported to enable transcoding in the case of playback on IP camera.



-END-