

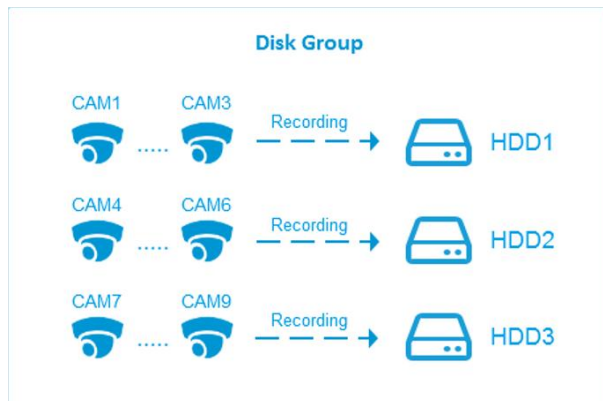


# Milesight-Troubleshooting

## Group

NVR Version	XX.9.0.2	Update	2018.12.17
-------------	----------	--------	------------

## 1. What is Group?



As you can see in the picture, you can divide disks into different Groups to store different channels' recorded files.

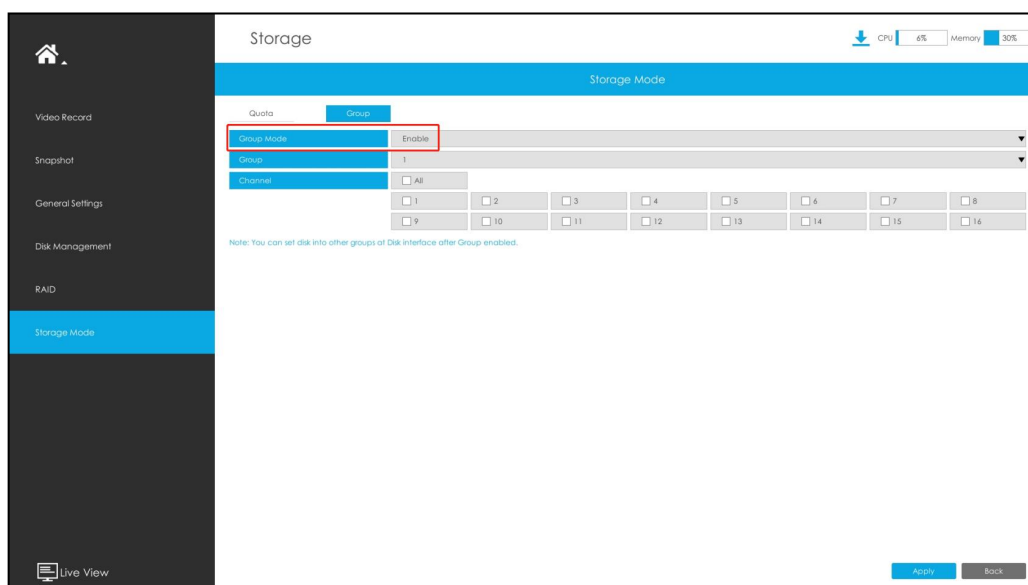
By this way, you can greatly reduce the load pressure of each hard disk.


## 2. How to set up Group?

**Note:** The Group only can set up on Monitor side.

There are three steps to complete the setting.

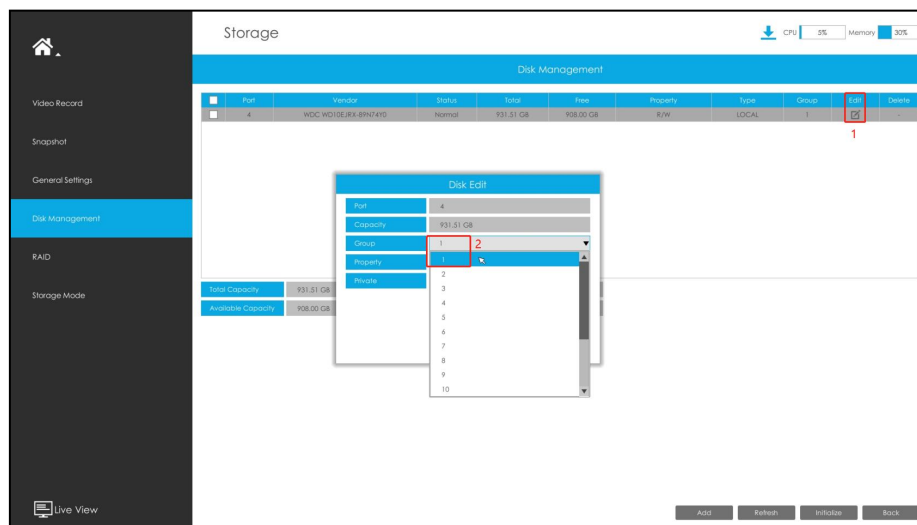
**Step1.** Go to "Storage" → "Storage Mode" → "Group". Then enable Group.



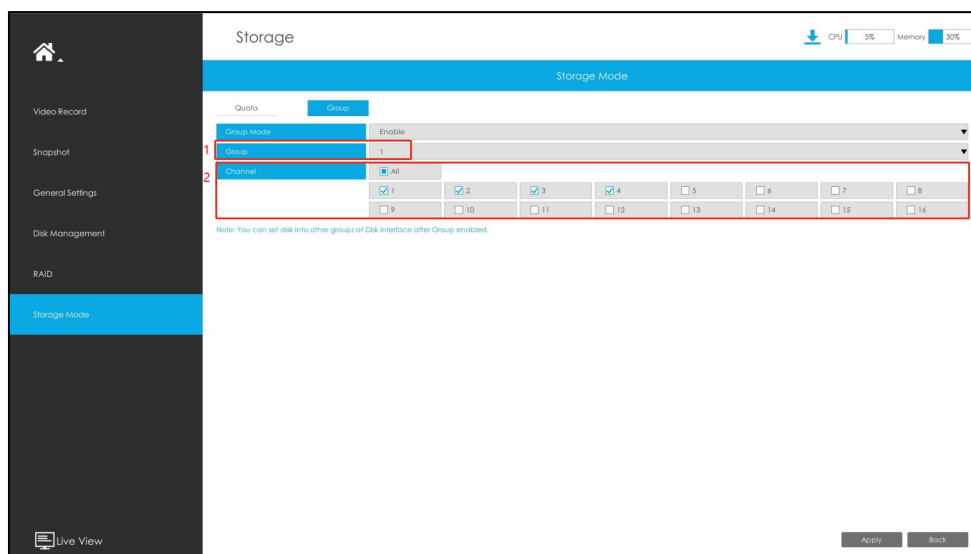
**Step 2.** Switch to Disk Management interface. Click  and set the group number of every disk.

**Note:**

You can add 16 groups at most.

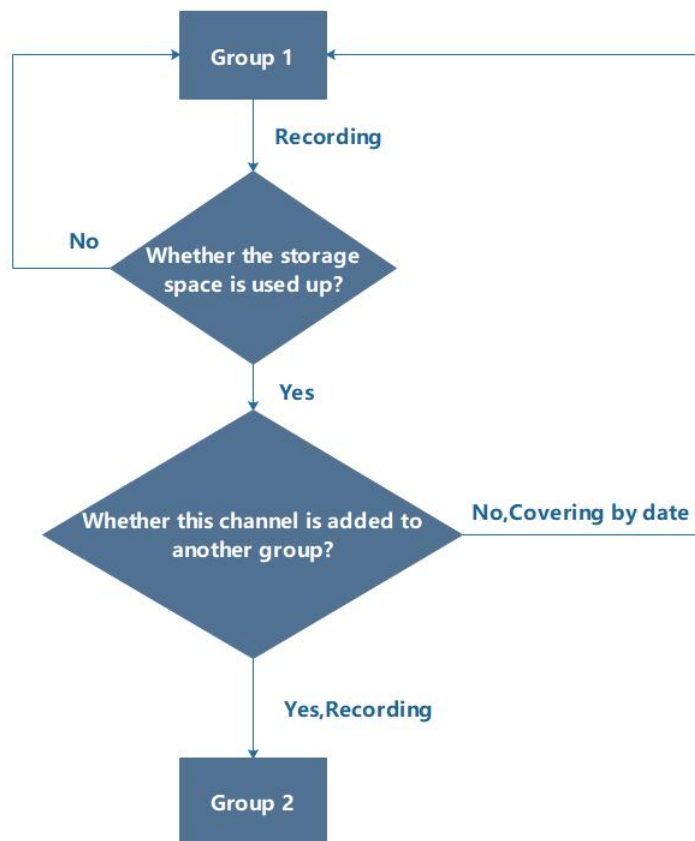


**Step 3.** Go to “Group”, Select group and channels which you want to record into this group.

**Note:**

1. When you have enabled the “Group”, please set a Group for each channel, otherwise the channel which doesn't set a Group can not be recorded.
2. The same channel can be added to multiple Groups(16 at most), but not recording in multiple Groups at the same time. The channel which is added to multiple Groups will record to the next Group when the last Group has run out of storage space. The channel which is only added to one Group will cover the recording according to the date(Older videos will be covered first) when the Group has run out of storage space.

This flowchart may help you understand this process



3. RAID and NAS also can be used to form Group.

**-END-**