



Milesight-Troubleshooting

Multicast

Camera Firmware	4x.7.0.79 or above	Update	2021.8.19
-----------------	--------------------	--------	-----------

1. Introduction

Multicast is the term used to describe communication where a piece of information is sent from one or more points to a set of other points. In this case there may be one or more senders, and the information is distributed to a set of receivers (there may be no receivers, or any other number of receivers).

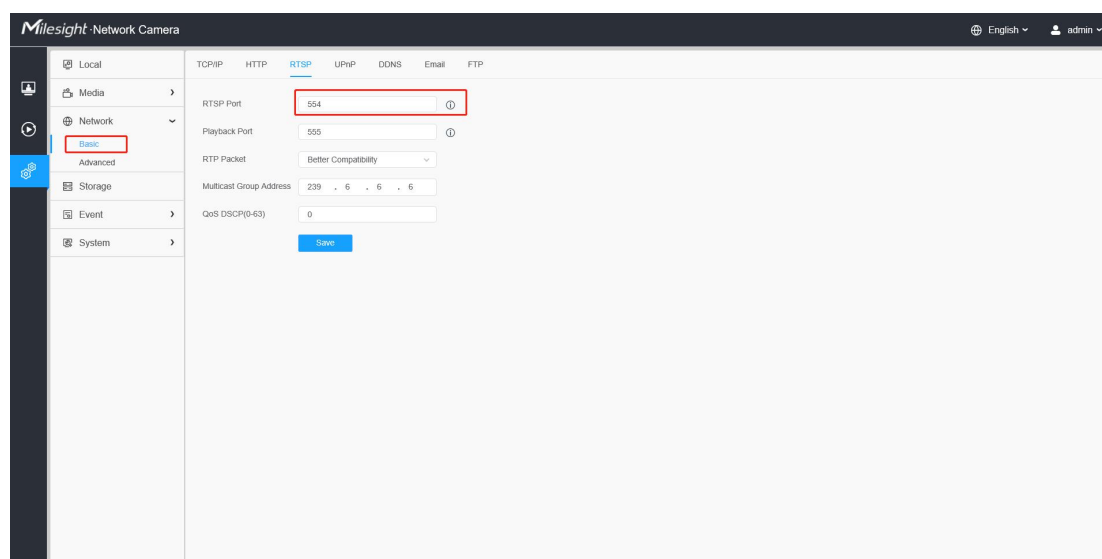
Multicast is the networking technique of delivering the same packet simultaneously to a group of clients. IP multicast provides dynamic many-to-many connectivity between a set of senders (at least 1) and a group of receivers. The format of IP multicast packets is identical to that of unicast packets and is distinguished only by the use of a special class of destination address (class D IPv4 address, from 224.0.0.0 to 239.255.255.255) which denotes a specific multicast group.

2. How to enable Multicast

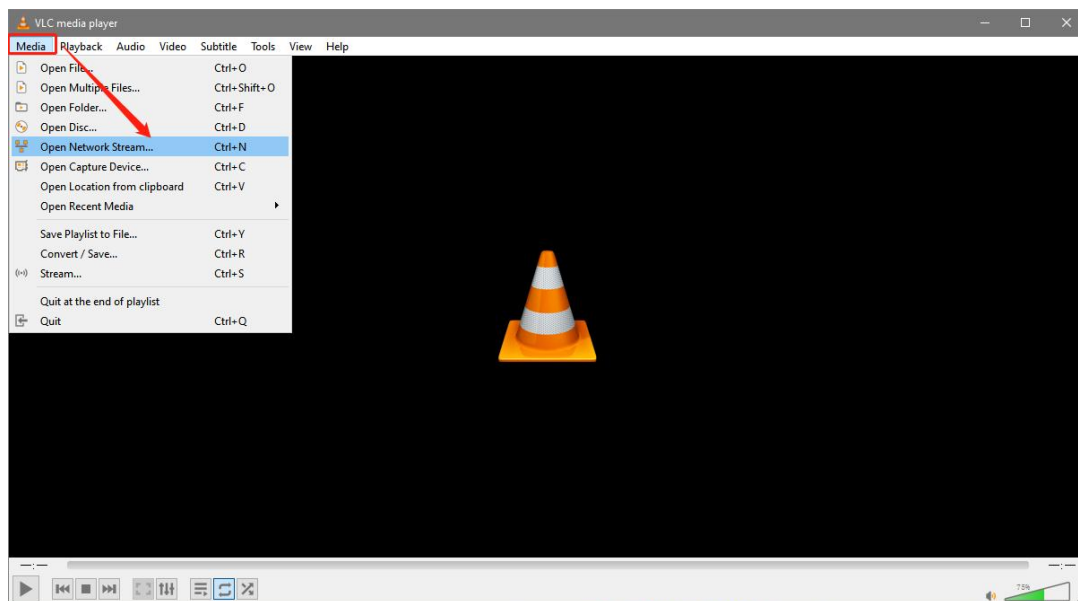
There are two types of multicast, RTP Multicast and UDP Multicast. Please refer to the following for detailed steps.

1. RTP Multicast

Step1: RTP Multicast is **enabled by default**, and the default RTP port is 554. You can verify RTP port on the web page setting.



Step2: Open VLC and find “Open Network Stream” function.



Step3: Enter the following command.

Primary Stream:

<rtsp://admin:camera password@camera ip address:rtp port/mcastmain>

Secondary Stream:

<rtsp://admin:camera password@camera ip address:rtp port/mcastsub>

Click “Play” and it should be multicast video comes out shows like.



2. UDP Multicast

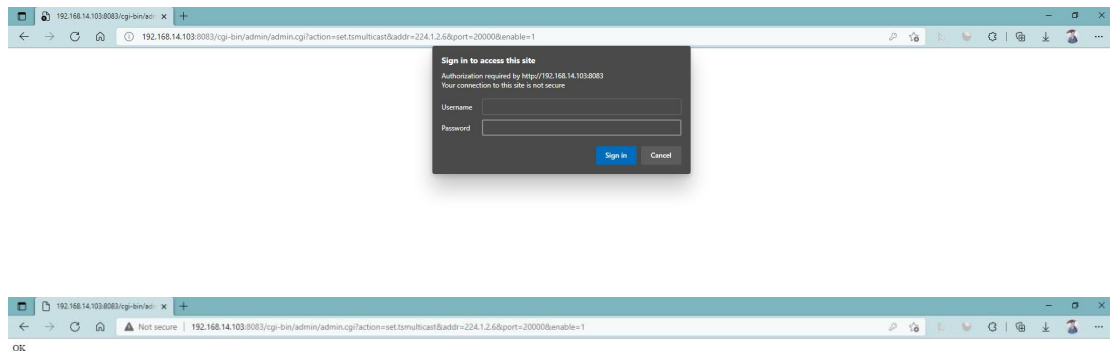
Step1: UDP Multicast is **disabled by default**. You can enable and configure this function

with the following command.

<http://camera> ip address/

cgi-bin/admin/admin.cgi?action=set.tsmulticast&addr=244.1.2.6&port=20000&enable=1

Web page will let you enter login username and password, then will shows OK



Note:

- ① If you want to enable the UDP multicast function for multiple devices in same LAN, please pay attention to modify different UDP multicast addresses.
- ② The modify range of UDP multicast addresses is from 224.x.x.x to 239.x.x.x.
- ③ Ensure that your camera's version is **4X.7.0.79 or above**.

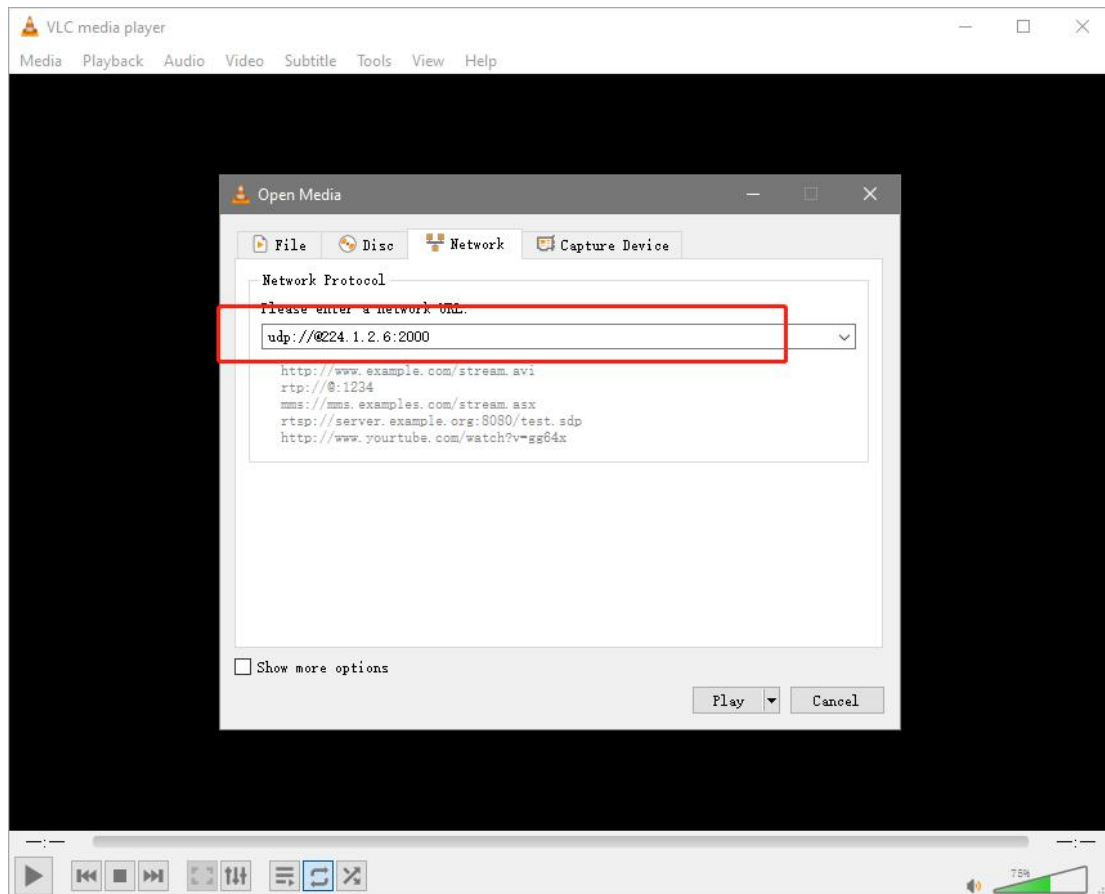
Step2: Check UDP Multicast information use following command.

<http://camera> ip address/cgi-bin/admin/admin.cgi?action=get.tsmulticast&format=inf



Step3: Go to VLC and enter the following command.

[udp://@udp multicast address: udp multicast port](#)



—————END—————