



Milesight-Troubleshooting

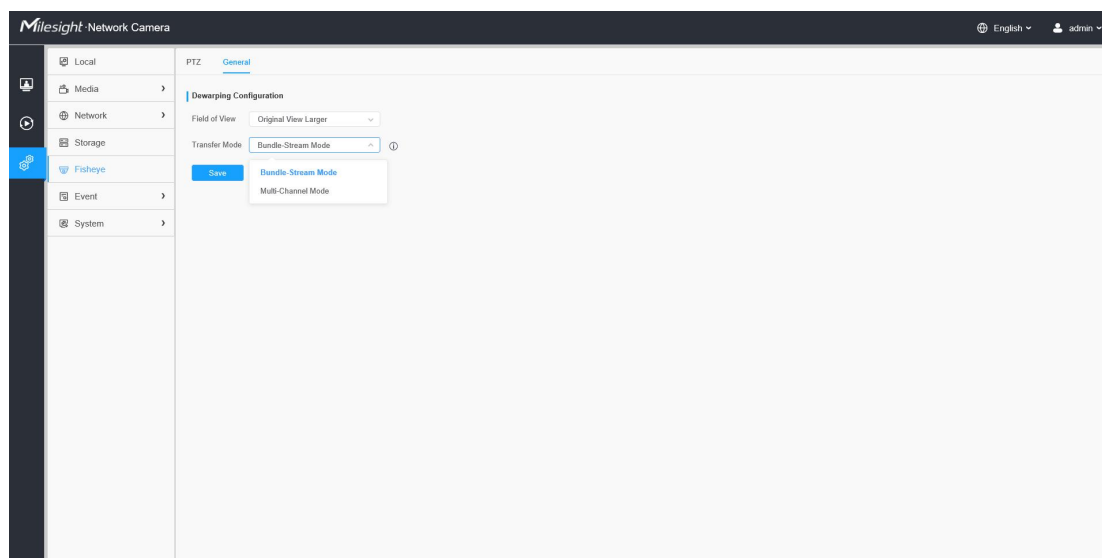
Advanced Features of Fisheye Camera

Update	2021.12.22
Update	2022.4.21

1. What Are Two Compatible Modes

Milesight Fisheye Camera offers Bundle-Stream Mode and Multi-Channel Mode to meet different needs. Bundle-Stream Mode combines all the channels into one and sends to NVR or VMS, which is easy for compatibility. Multi-Channel Mode sends all the original channels to NVR or VMS, so the channels can be modified separately.

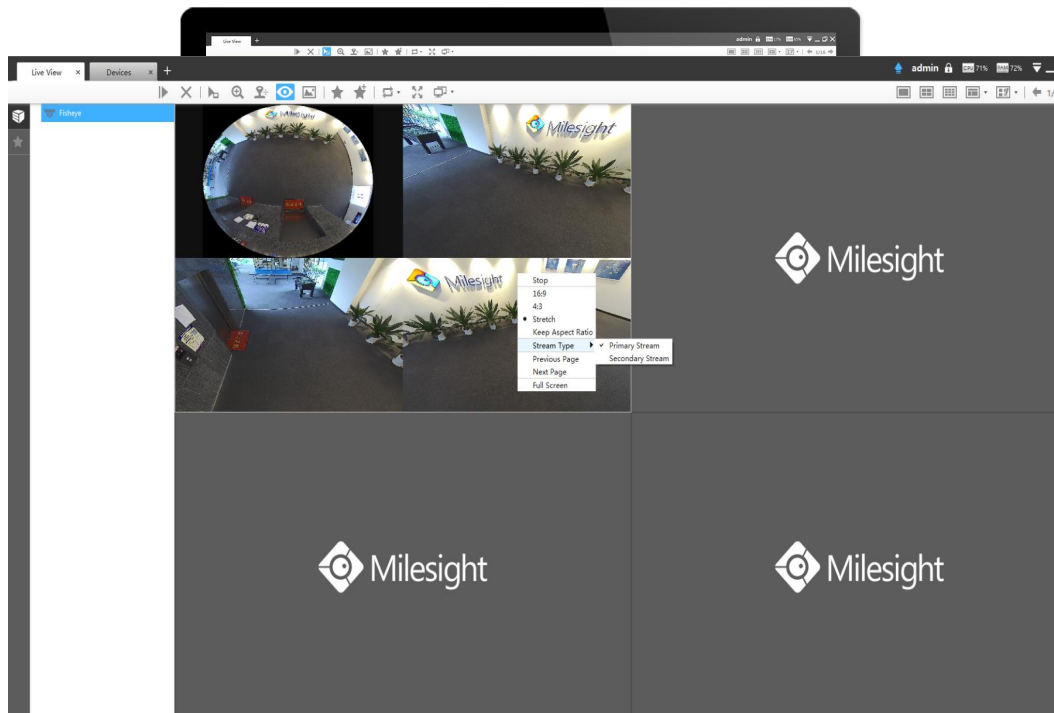
* Milesight recommend you to use Bundle-Stream Mode with Milesight NVR and CMS.



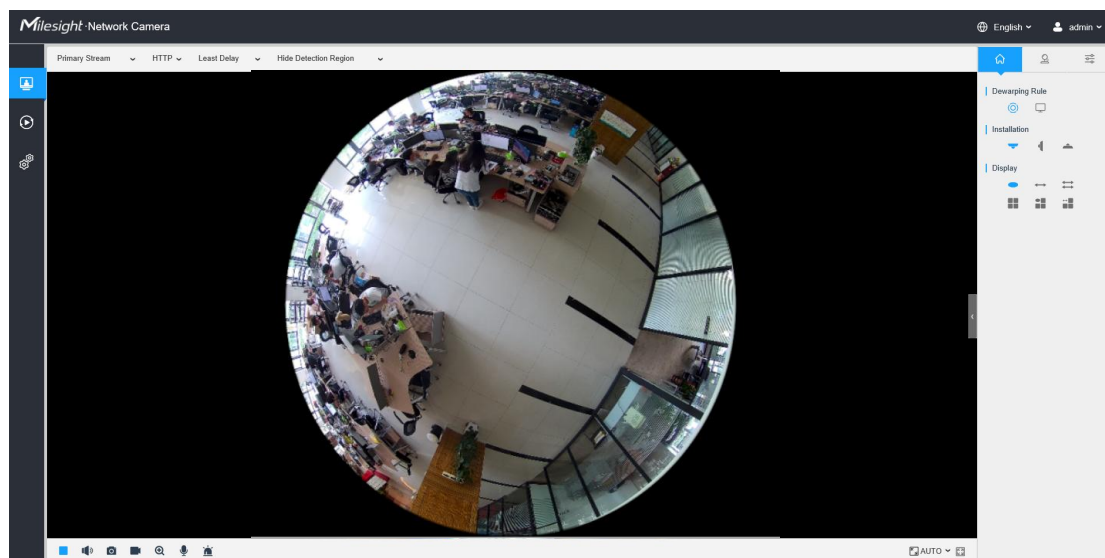
(1) Bundle-Stream Mode

Bundle-Stream Mode is a kind of default compatibility mode for Milesight Fisheye Camera. It can **bundle all the display viewings together into only one channel**, which can be delivered to NVR or VMS directly with its primary and secondary stream.

Bundle-Stream Mode can be regarded as the better compatible mode used with back end side. The original Fisheye view is already dewarped by camera itself, it doesn't need other software dewarping but can get a great dewarping view on NVR and VMS side.



Under Bundle-Stream Mode, it can support **Ceiling, Wall, Flat** three kinds of installation modes and six kinds of display modes including **1O(one Original View)**, **1P(one Panoramic View)**, **2P(two Panoramic View)**, **4R(four Regional View)**, **1O3R(one Original View and three Regional View)**, **1P3R(one Panoramic View and three Regional View)**, to achieve a flexible viewing mode for your demanding. Any of these modes support **primary and secondary streams**.

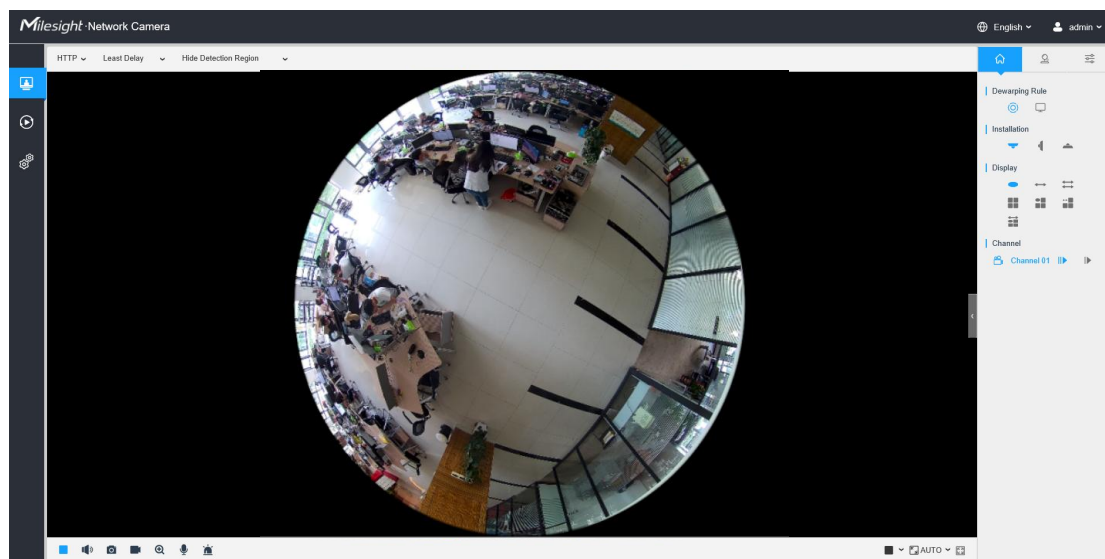


(2) Multi-Channel Mode

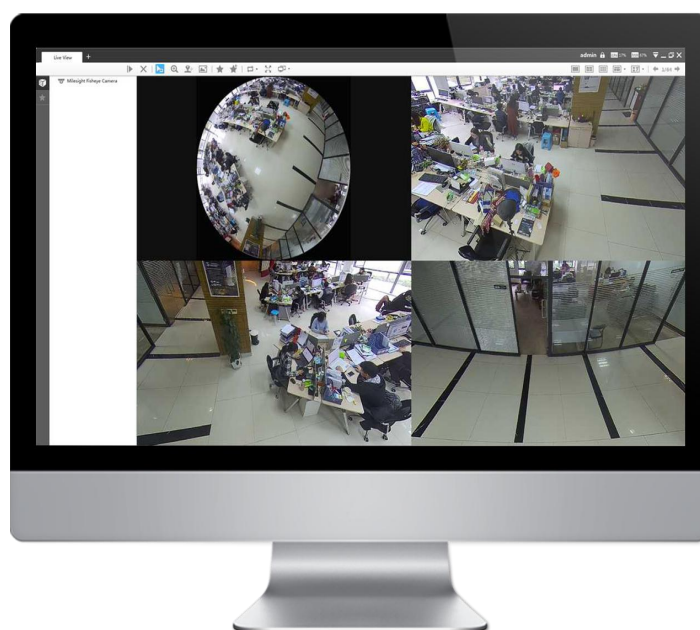
Multi-Channel Mode can **separate every dewarping view into independent channels**.

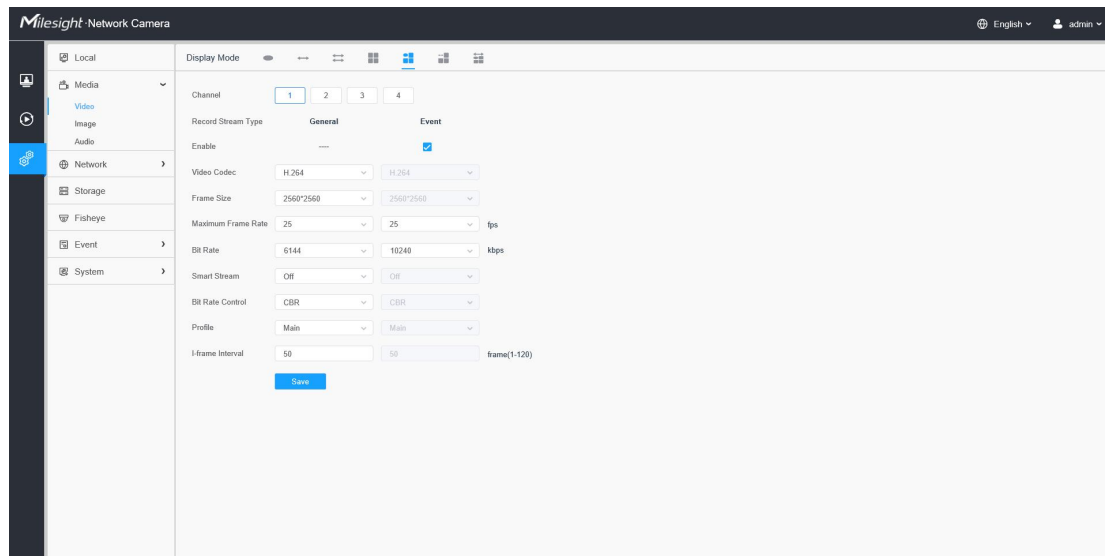
Multi-Channel Mode provides users a complete experience working with some VMS software such as Network Optix, iNEX, Aimetis and so on, which can access all channels from Milesight Fisheye Camera. Also with these independent channels, you can control the virtual PTZ operation on VMS side directly.

Under Multi-Channel Mode, it can also support **Ceiling, Wall, Flat** three kinds of installation modes and seven kinds of display modes including **1O(one Original View)**, **1P(one Panoramic View)**, **2P(two Panoramic View)**, **4R(four Regional View)**, **1O3R(one Original View and three Regional View)**, **1P3R(one Panoramic View and three Regional View)**, and **1O1P3R(one Original View, one Panoramic View and three Regional View)** to achieve a flexible viewing mode for your demanding.



With Multi-Channel Mode, you can set parameters for every dewarping channel.

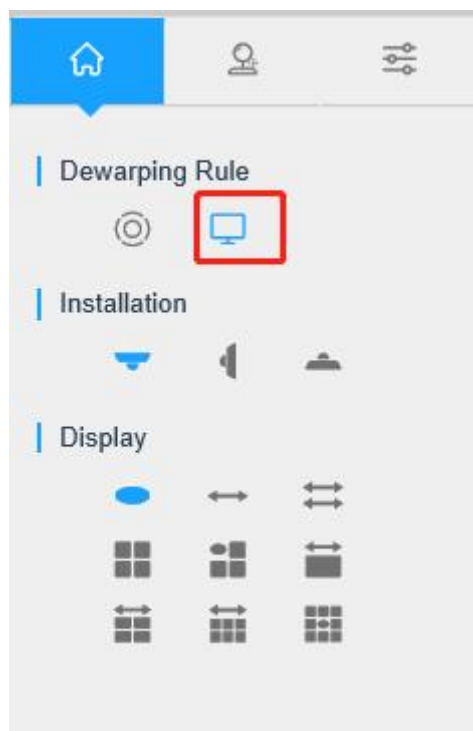




2. Dewarping Rule

Milesight Fisheye Camera offers two dewarping rules, except the hardware dewarping (on-board dewarping), it can also support software dewarping (client-side dewarping). Click the button to select the dewarping rule. The hardware dewarping is used for redress and send an independent view inside the fisheye camera. The software dewarping is used for send multiple views and redress them on the client.

There are different display modes in different installation methods. Under the software dewarping mode, including **1O(one Original View)**, **1P(one Panoramic View)**, **2P(two Panoramic View)**, **4R(four Regional View)**, **1O3R(one Original View and three Regional View)**, **1P1R(one Panoramic View and one Regional View)**, **1P4R(one Panoramic View and four Regional View)**, **1P6R(one Panoramic View and six Regional View)**, **1O8R(one Original View and eight Regional View)** to achieve a flexible viewing mode for your demanding.

**Note:**

- A. Original fisheye view: the whole wide-angle view of the fisheye camera is displayed.
- B. Panoramic view: the round fisheye image is transformed to rectangular image by certain calibration methods.
- C. Regional view: the close-up view of defined area in the original fisheye view or panoramic view.
- D. Select the Installation, Display mode and the most appropriate Window Layout in sequence.

—————END—————