



# Milesight-Troubleshooting

VMS Enterprise Multi-Monitor

## Contents

<b>Chapter I Introduction .....</b>	<b>2</b>
<b>Chapter II Operations .....</b>	<b>3</b>
2.1 How to Enable Multi-Monitor? .....	3
2.1.1 How to Set [None] Mode? .....	4
2.1.2 How to Set [Live Screen] Mode? .....	4
2.1.3 How to Set [Alarm Screen] Mode? .....	6
2.1.4 How to Set [Full Screen] Mode? .....	8

VMS Version	V1.2.0.1 or above	Update	2021.5.28
-------------	-------------------	--------	-----------

## Chapter I Introduction


“Milesight VMS Client” supports multiple monitors display setting. Multi-Monitor function meets the needs of users for more application scenarios. Each monitor has 6 modes to choose from, including [None], [Live Screen], [Alarm Screen], [Full Screen], [E-Map] and [Playback]. Both Live Screen and Alarm Screen support up to 64 channels in single screen. The Full Screen only supports displaying 1 channel. In addition, Multi-Monitor function also supports identifying monitors of corresponding screens.

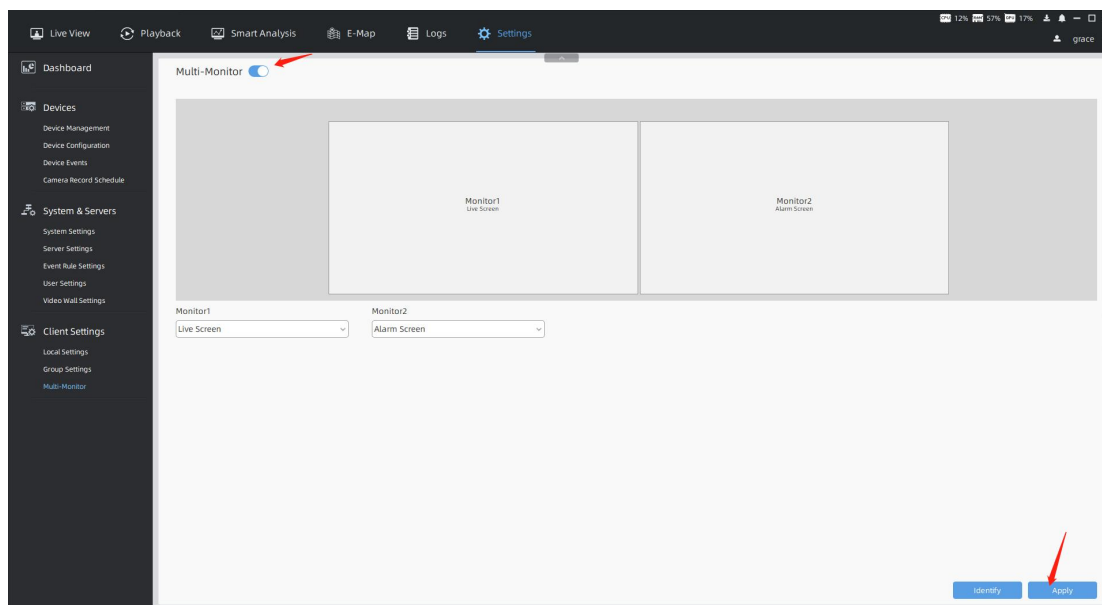
Different screen modes support different functions.

- **None:**  
No settings are made for other monitors.
  - **Live Screen:**  
For this mode, you can add any camera you want to display on the specified monitor so that you can view the real-time video. In addition, the Live Screen mode supports up to 64 live view channels per monitor.
  - **Alarm Screen:**  
For this mode, you need to set the event rules and select the action of [Show on Alarm Screen] for the camera, then the real-time video will be played on the specified monitor when the corresponding event is triggered. This is helpful for users to track camera event in time and view the real-time video.
  - **Full Screen:**  
For this mode, you can directly set [Show on Full Screen] for the selected camera in the Live View interface, then the real-time video will be showed on the specified monitor as full screen mode. Of course, you can also set the event rules and select the action of [Show on Full Screen] for the camera, then the real-time video will be played on the specified monitor when the corresponding event is triggered. It solves the inconvenience of not being able to operate other interfaces after the Live View interface channel goes full screen.
  - **E-Map:**  
Users can use the E-map function in this mode.
  - **Playback:**  
For this mode, users can search and play back the recorded files of selected cameras.
- Note:** You can only set one Alarm Screen and one full screen, and there is no limit to the number of Live Screen, E-Map Screen and Playback Screen.

## Chapter II Operations

### 2.1 How to Enable Multi-Monitor?

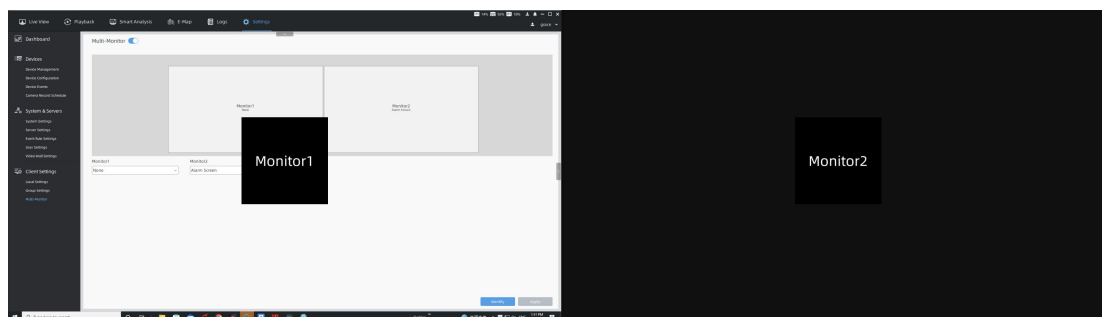
First, click the Enable icon  to enable Multi-Monitor and then click [Apply] button to apply Multi-Monitor in the Settings -> Client Settings -> Multi-Monitor interface.



Note:

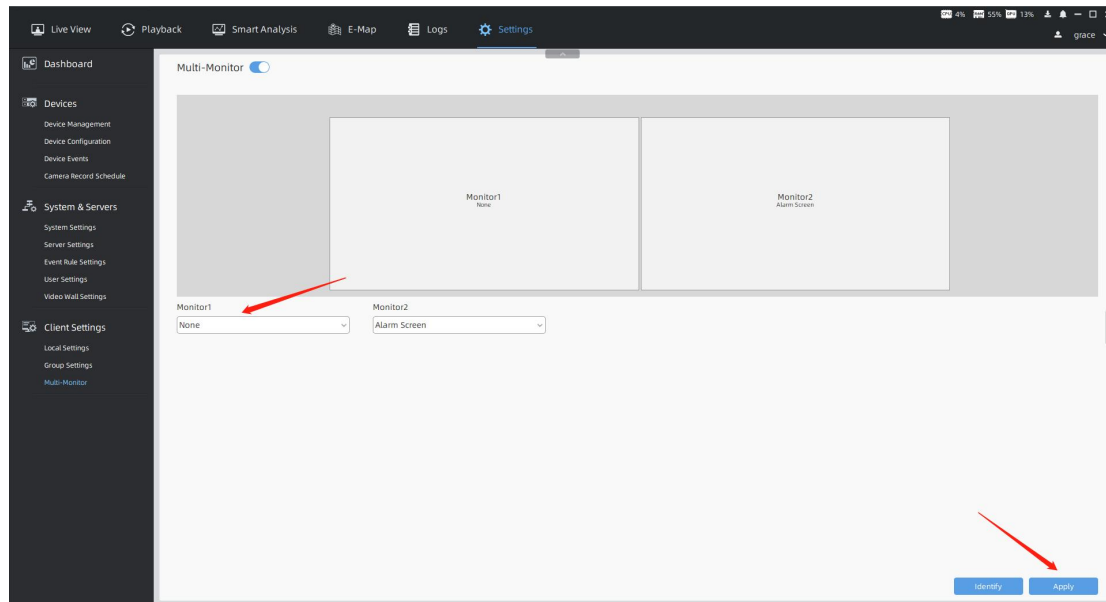
- There is no limit to the number of monitors, it depends on the number of monitors connected to the computer.
- There is no configuration quantity limit for Live Screen, but Alarm Screen and Full Screen can only set one separately.

In addition, you can click [Identify] button to see the corresponding number of each available monitor.



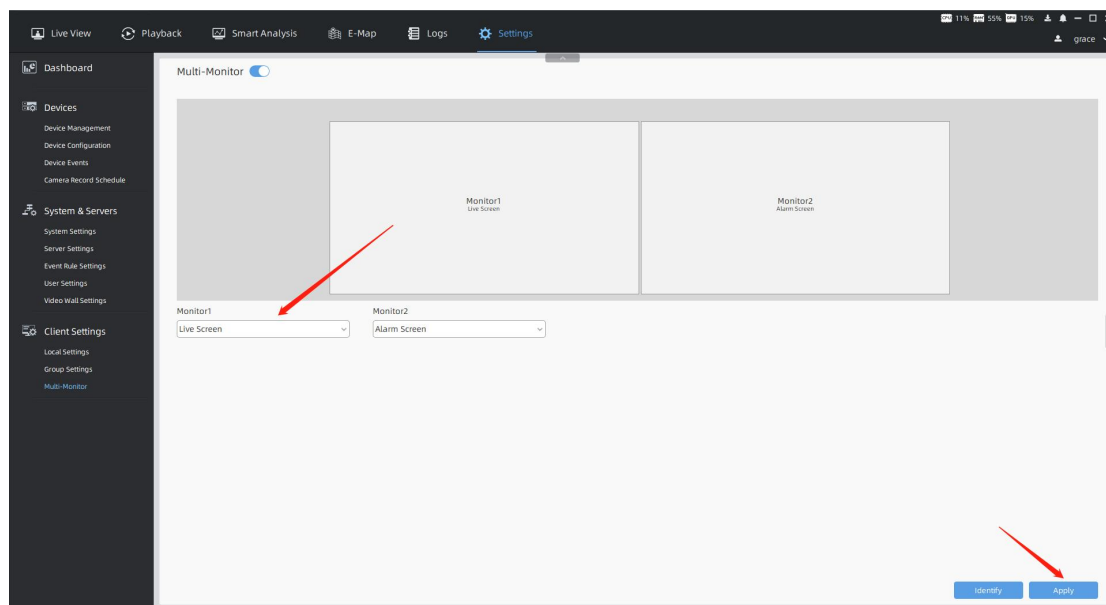
## 2.1.1 How to Set [None] Mode?

If you don't want to make any settings with the specified monitor, you can select [None] option and then click [Apply] button to apply [None] Mode.

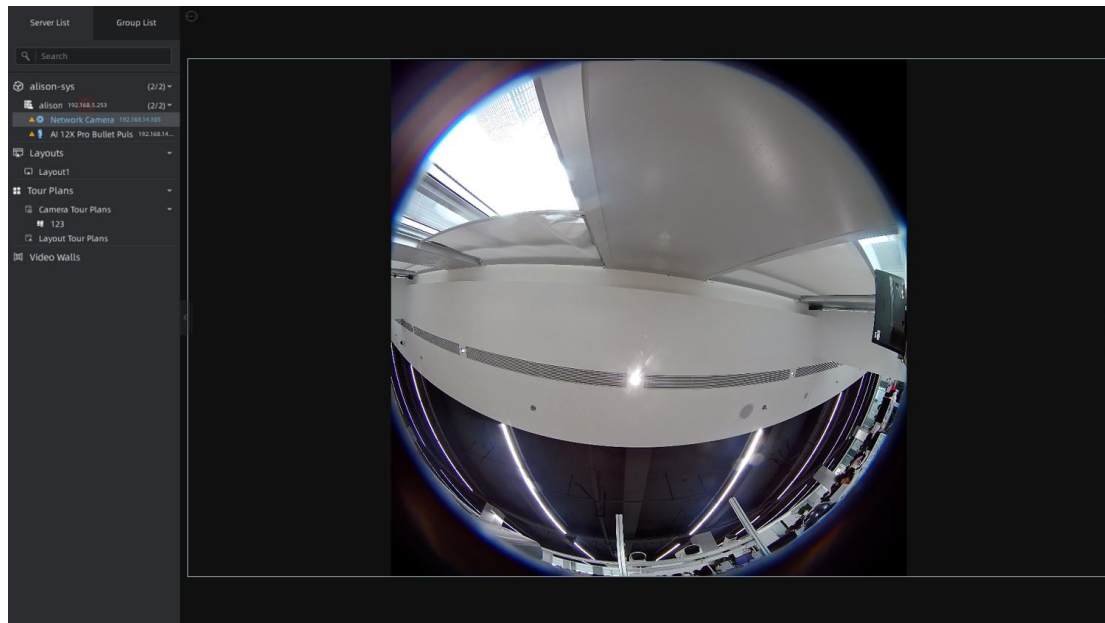



## 2.1.2 How to Set [Live Screen] Mode?

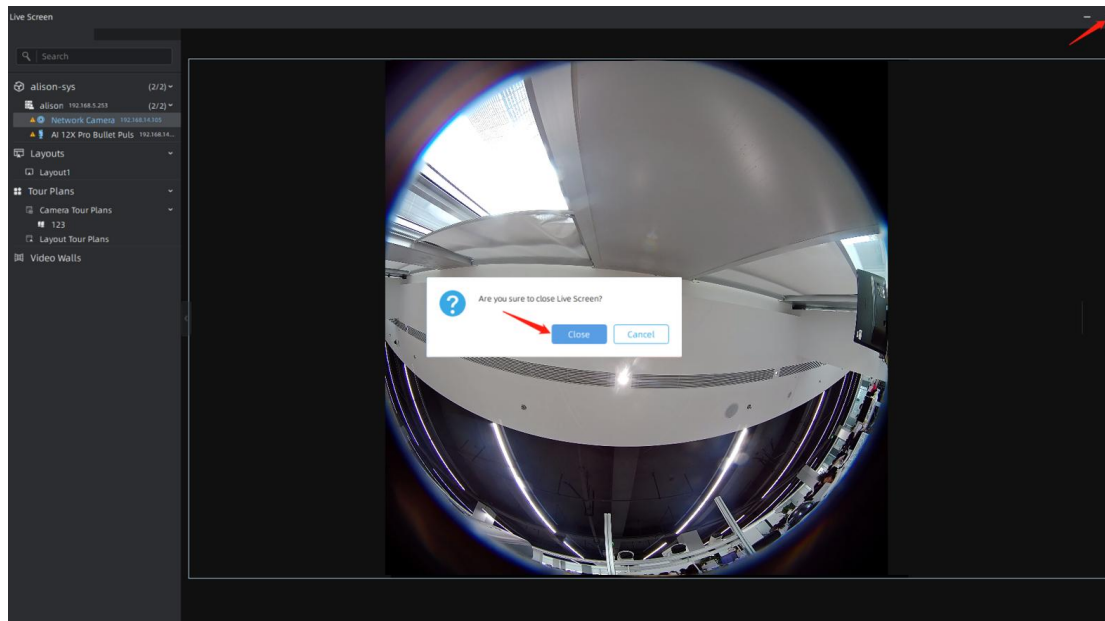
**Step 1:** Select [Live Screen] option for the specified monitor and then click [Apply] button to apply [Live Screen] Mode.

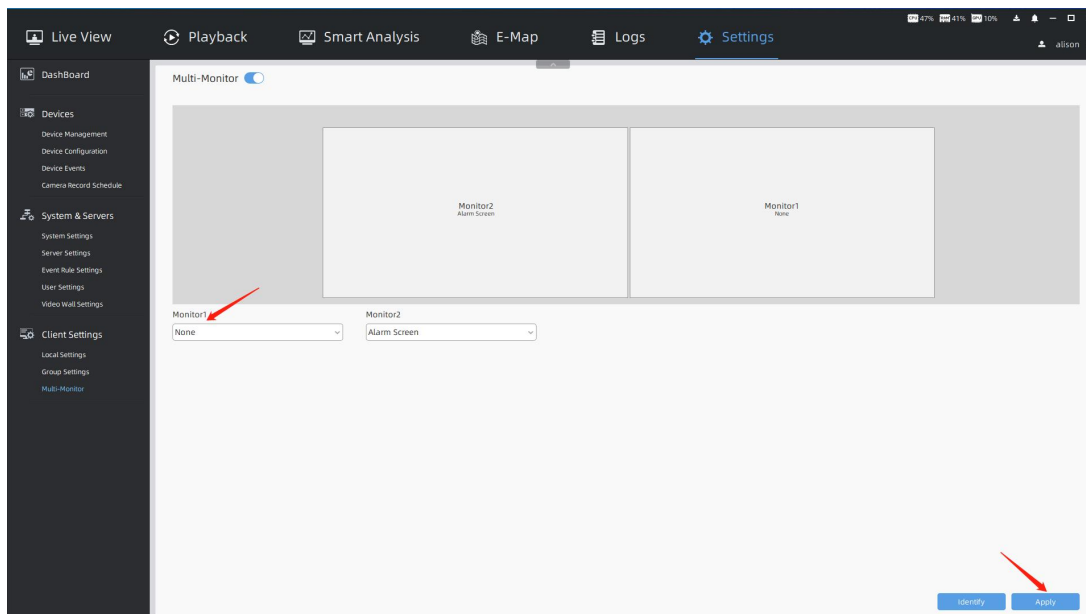


**Step 2:** Drag the camera which you want to show on the specified monitor from the list on the left and move it into the Live View window, then you can view the real-time video on the specified monitor.



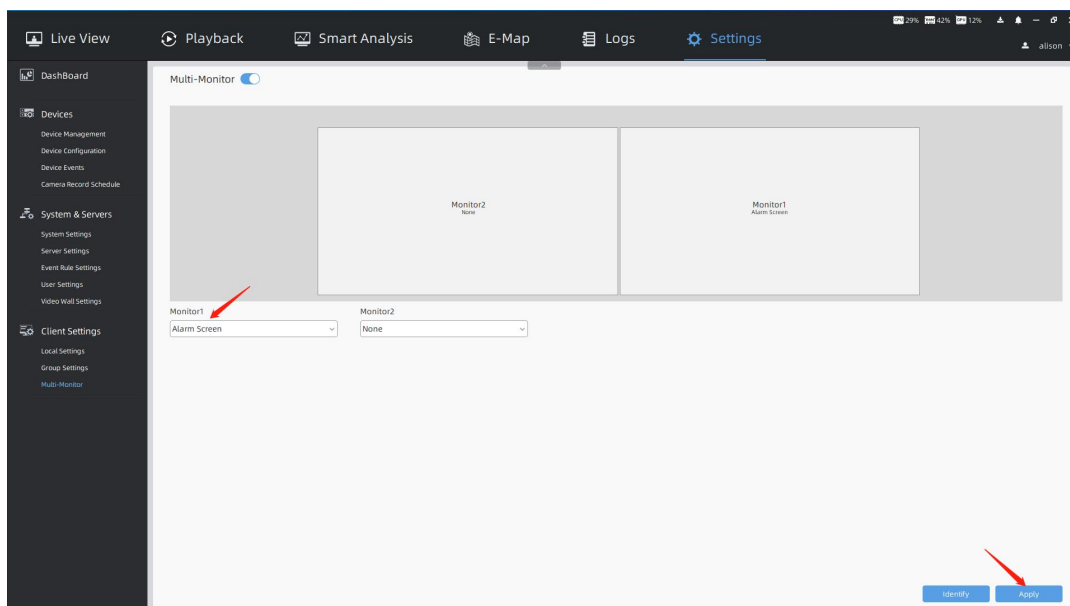
**Step 3:** If you want to close Live Screen, you can move the mouse to the top of the screen to display the top bar, then you can click the icon  and select [Close] button to close it. After the screen is turned off, the monitor will automatically change to [None] Mode. If you want to use Live Screen again, you need to reset [Live Screen] Mode.



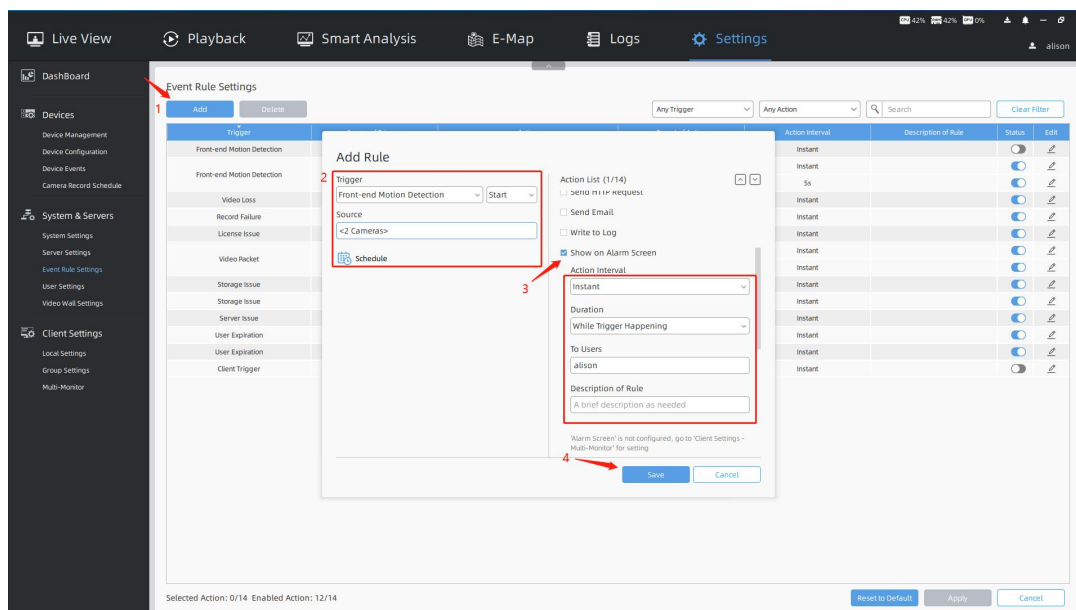


## 2.1.3 How to Set [Alarm Screen] Mode?

**Step 1:** Select [Alarm Screen] option for the specified monitor and then click [Apply] button to apply [Alarm Screen] Mode.



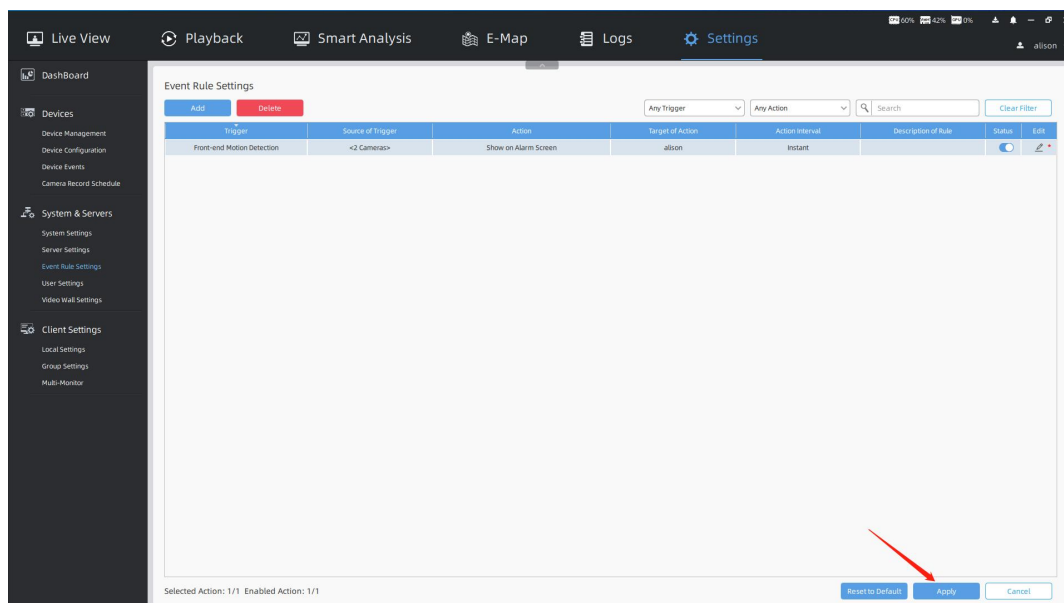
**Step 2:** Click [Add] button to add the event rule in the Settings -> System & Servers -> Event Rule Settings interface, then set the trigger type, the source of trigger and schedule you want, and set the action of [Show on Alarm Screen]. After setting the event rule, click [Save] button.

**Note:**

The following trigger types support the action of [Show on Alarm Screen]:

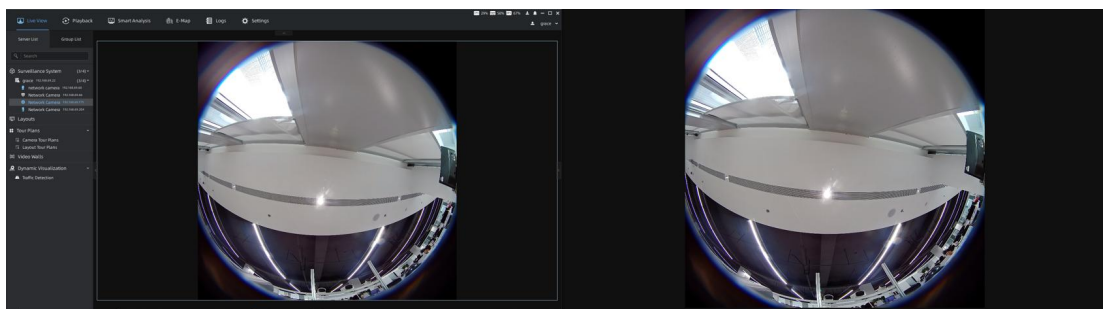
Front-end Motion Detection, Front-end Audio Alarm, Front-end External Input Alarm, Front-end VCA, ANPR, Record Failure, RTP Packet Loss and Client Trigger.

**Step 3:** Then the event rule will be added to the event rule list. Click [Apply] button to apply the customized event rule.



**Step 4:** When the camera is triggered, the real-time video will be played on the specified monitor.



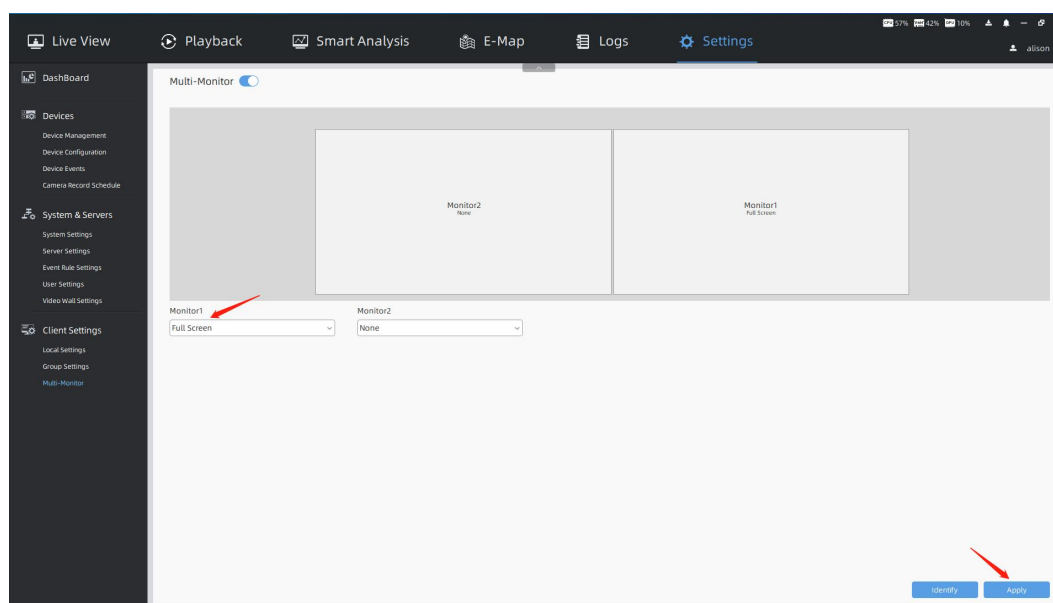


(Note: The picture on the left is Monitor1 and the picture on the right is Monitor2.)

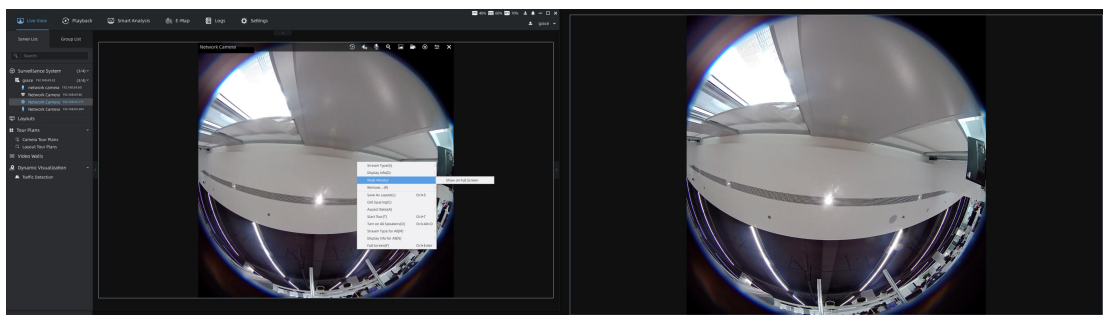
**Step 5:** If you want to close Alarm Screen, you can refer to Step 3 of 2.1.2 for operation steps.

## 2.1.4 How to Set [Full Screen] Mode?

**Step 1:** Select [Full Screen] option for the specified monitor and then click [Apply] button to apply [Full Screen] Mode.

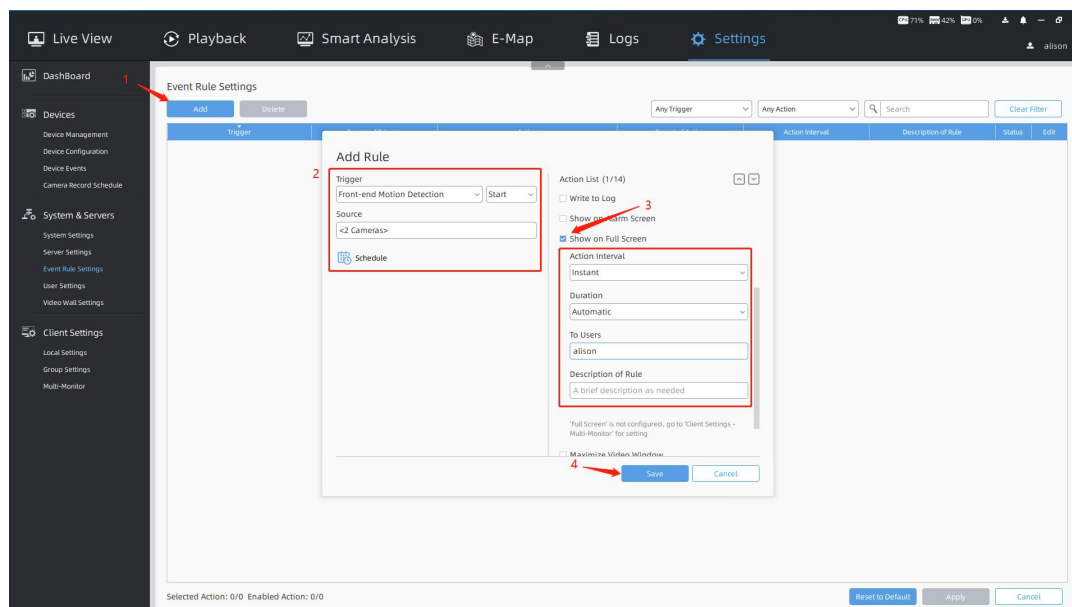


**Step 2:** Right-click the Live View window for the selected camera, and set Multi-Monitor as [Show on Full Screen] option. Then the Live View window of the camera will be displayed on the specified monitor as Full Screen.



(Note: The picture on the left is Monitor1 and the picture on the right is Monitor2.)

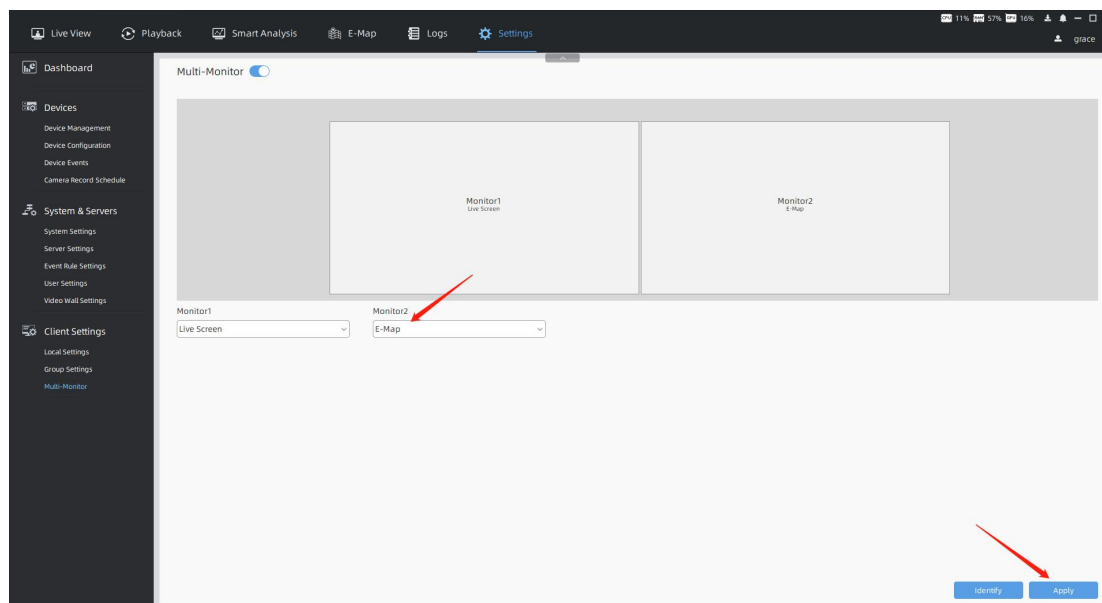
In addition, you can also set the event rule and select the action of [Show on Full Screen] to trigger [Full Screen] Mode. Please refer to Step 2 and Step 3 of 2.1.3 for operation steps.



**Step 3:** If you want to close Full Screen, you can refer to Step 3 of 2.1.2 for operation steps.

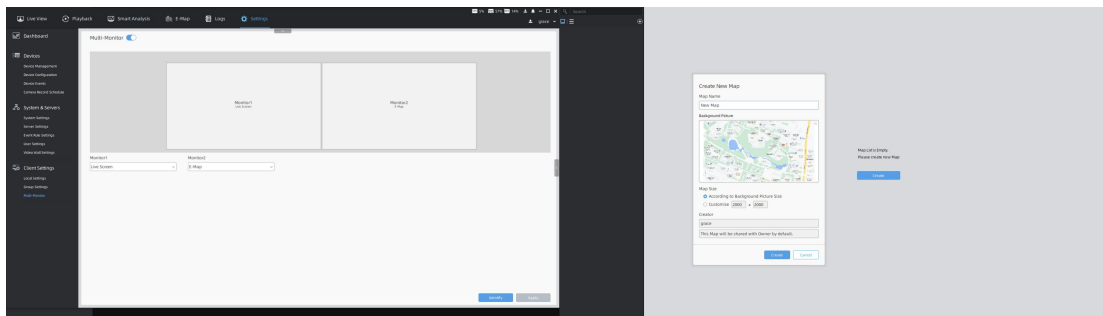
## 2.1.5 How to Set [E-Map] Mode?

**Step 1:** Select [E-Map] option for the specified monitor and then click [Apply] button to apply [E-Map] Mode.

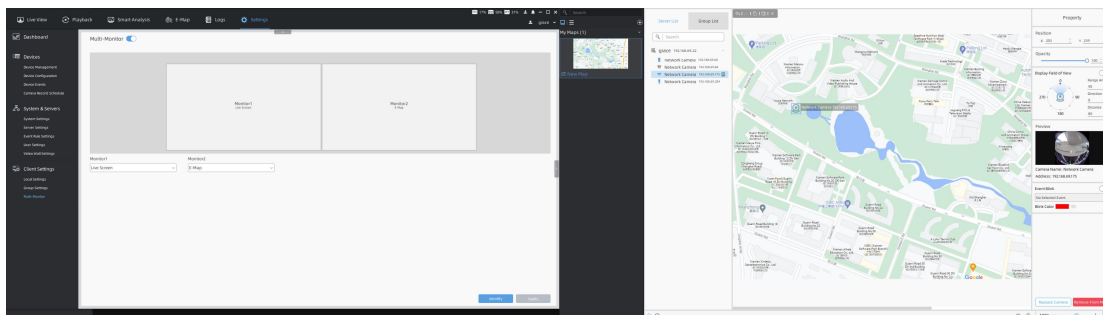


**Step 2:** The E-Map interface will display on the selected screen. Click "Create" button

to create a new map.

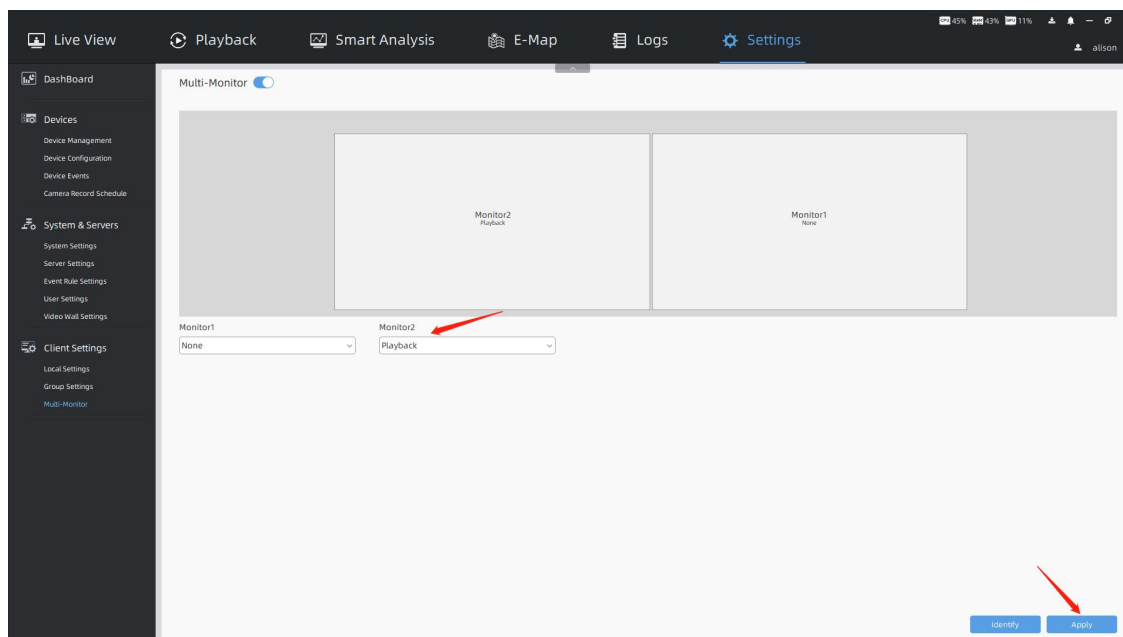


**Step 3:** You can drag the camera onto the map and make some further settings.

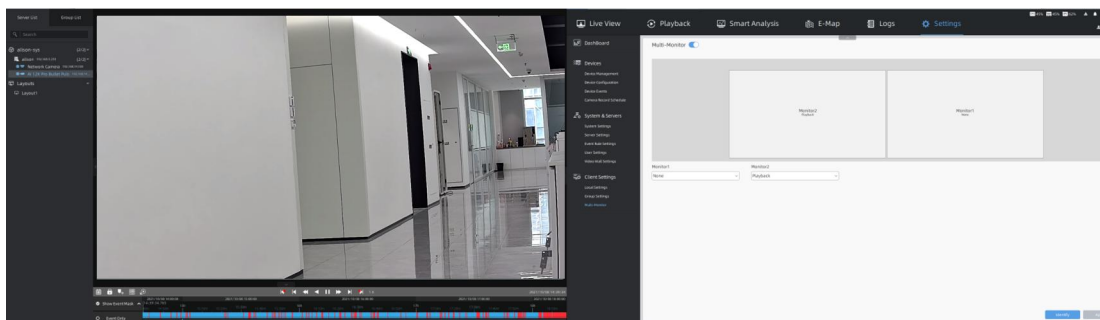



## 2.1.6 How to Set [Playback] Mode?

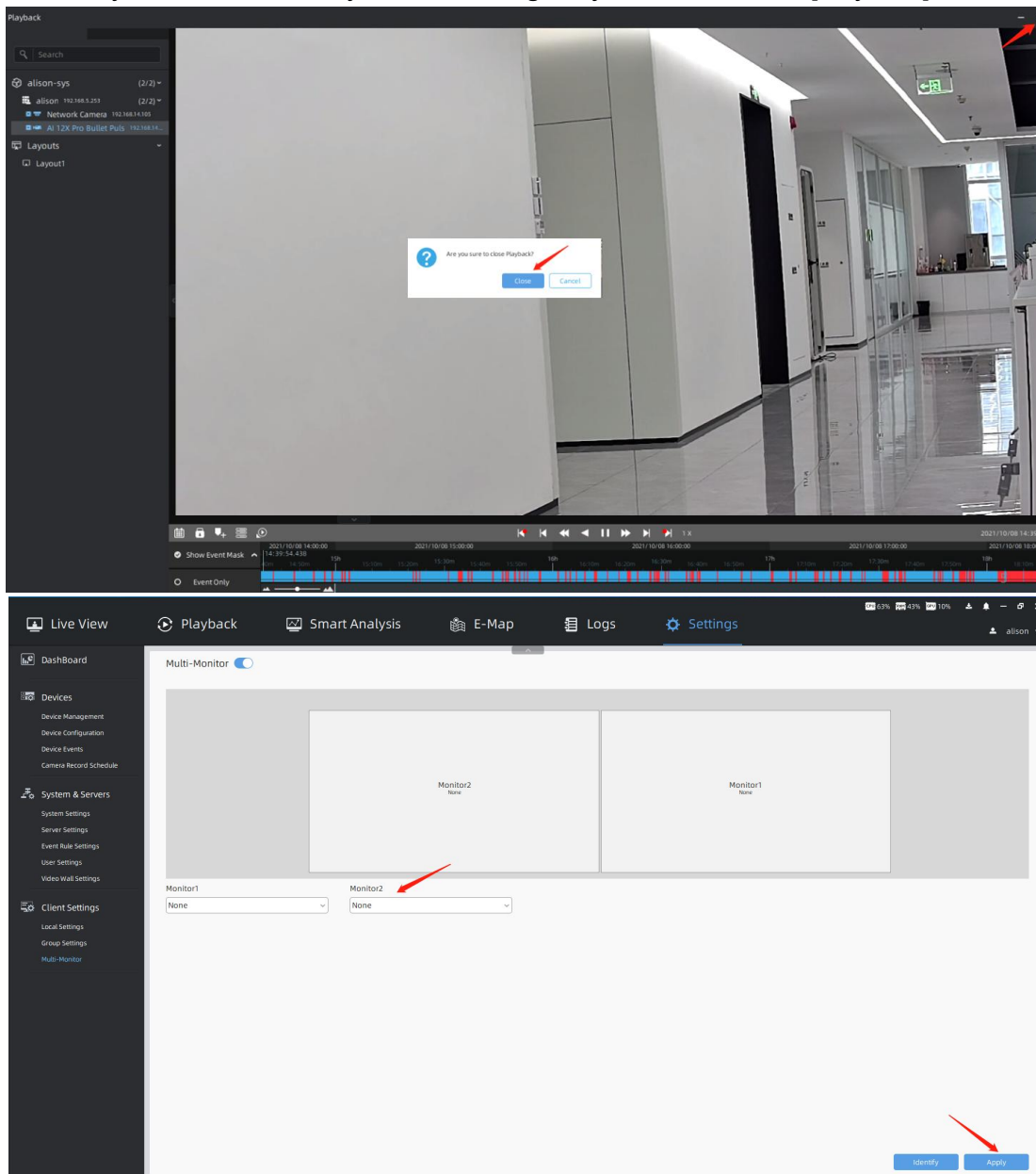
**Step 1:** Select [Playback] option for the specified monitor and then click [Apply] button to apply [Playback] Mode.



**Step 2:** The Playback interface will display on the selected screen. You can search and play back the recorded files of selected cameras.



**Step 3:** If you want to close Playback Screen, you can move the mouse to the top of the screen to display the top bar, then you can click the icon  and select [Close] button to close it. After the screen is turned off, the monitor will automatically change to [None] Mode. If you want to use Playback Screen again, you need to reset [Playback] Mode.



**-END-**